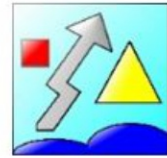


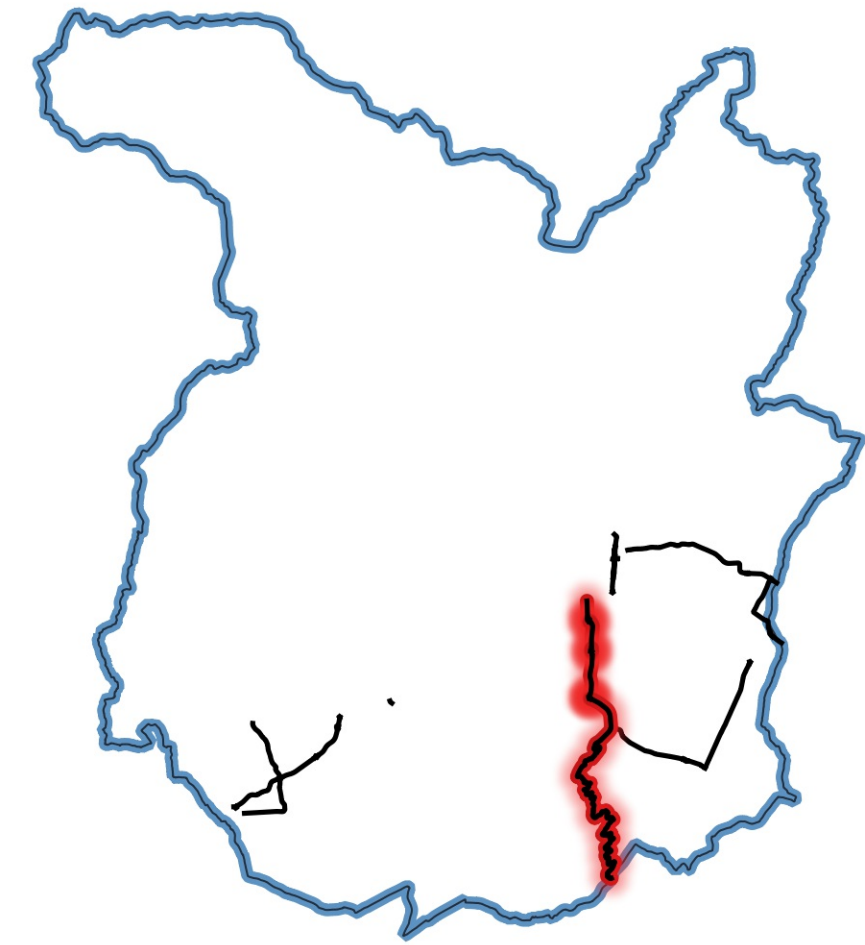


PROVINCIA di PISTOIA

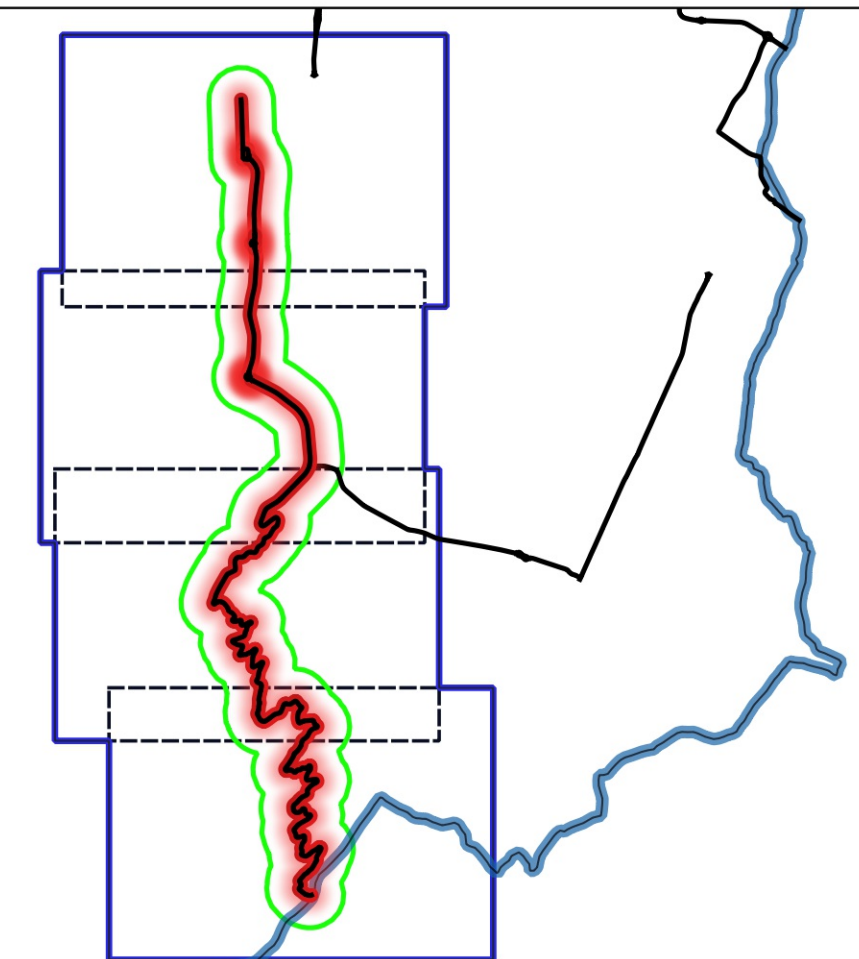


Vie en.ro.se.
Ingegneria

INQUADRAMENTO TERRITORIALE – PROVINCIA DI PISTOIA



INQUADRAMENTO TERRITORIALE – AREA DI CALCOLO



PROVINCIA DI
PISTOIA

Decreto Legislativo 19/08/2005, n. 194 "Attuazione della direttiva 2002/49/CE relativa alla determinazione e alla gestione del rumore ambientale"

Piano d'Azione - Terza fase di attuazione (quinquennio 2017/2021)

PROVINCIA DI PISTOIA

RETE STRADALE PROVINCIALE (assi stradali principali con flusso veicolare superiore ai 3 milioni di veicoli/anno)

IT_a_AP_MRoad0042_Allegato_2_03

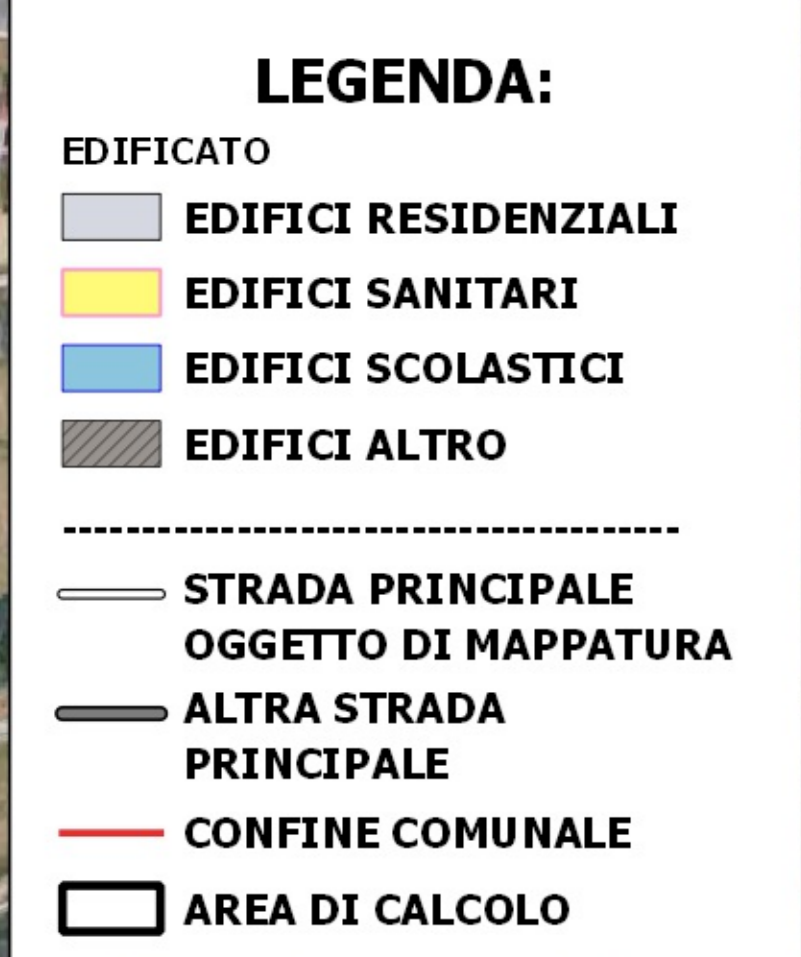
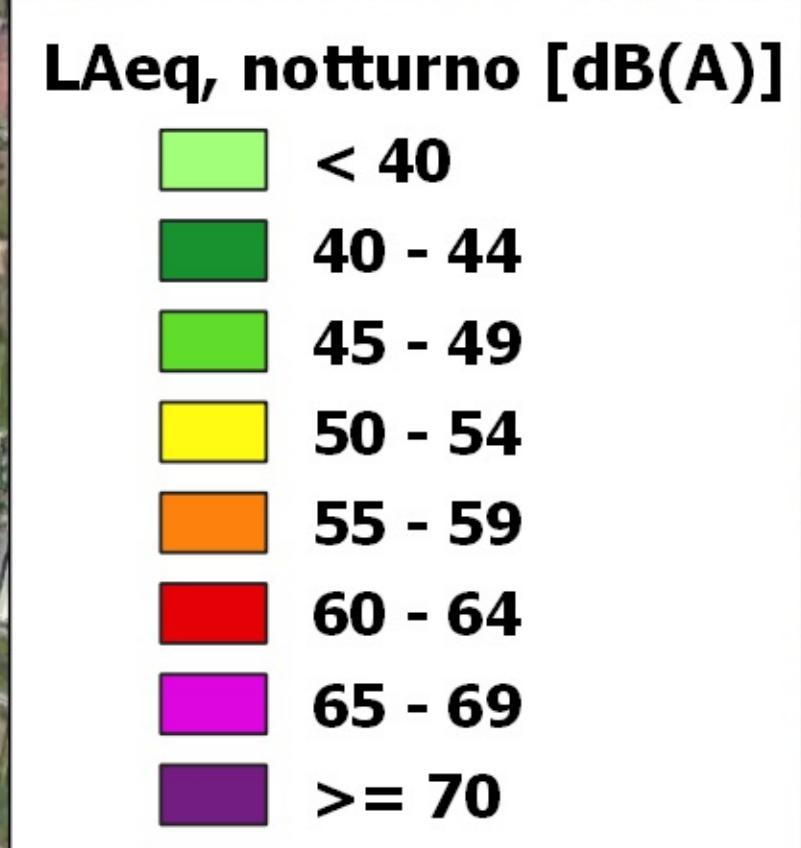
Mappe acustiche L_{notturmo} (22.00-6.00) configurazione ante operam - SP 9 MONTALBANO

CODICE IDENTIFICATIVO: IT_a_rd0042003

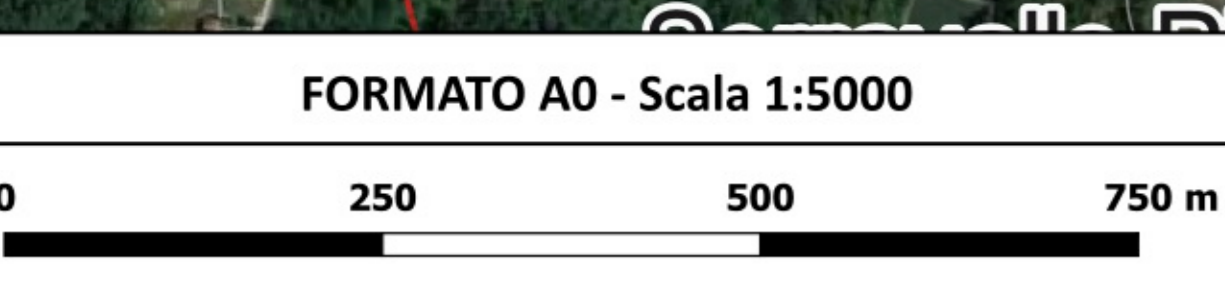
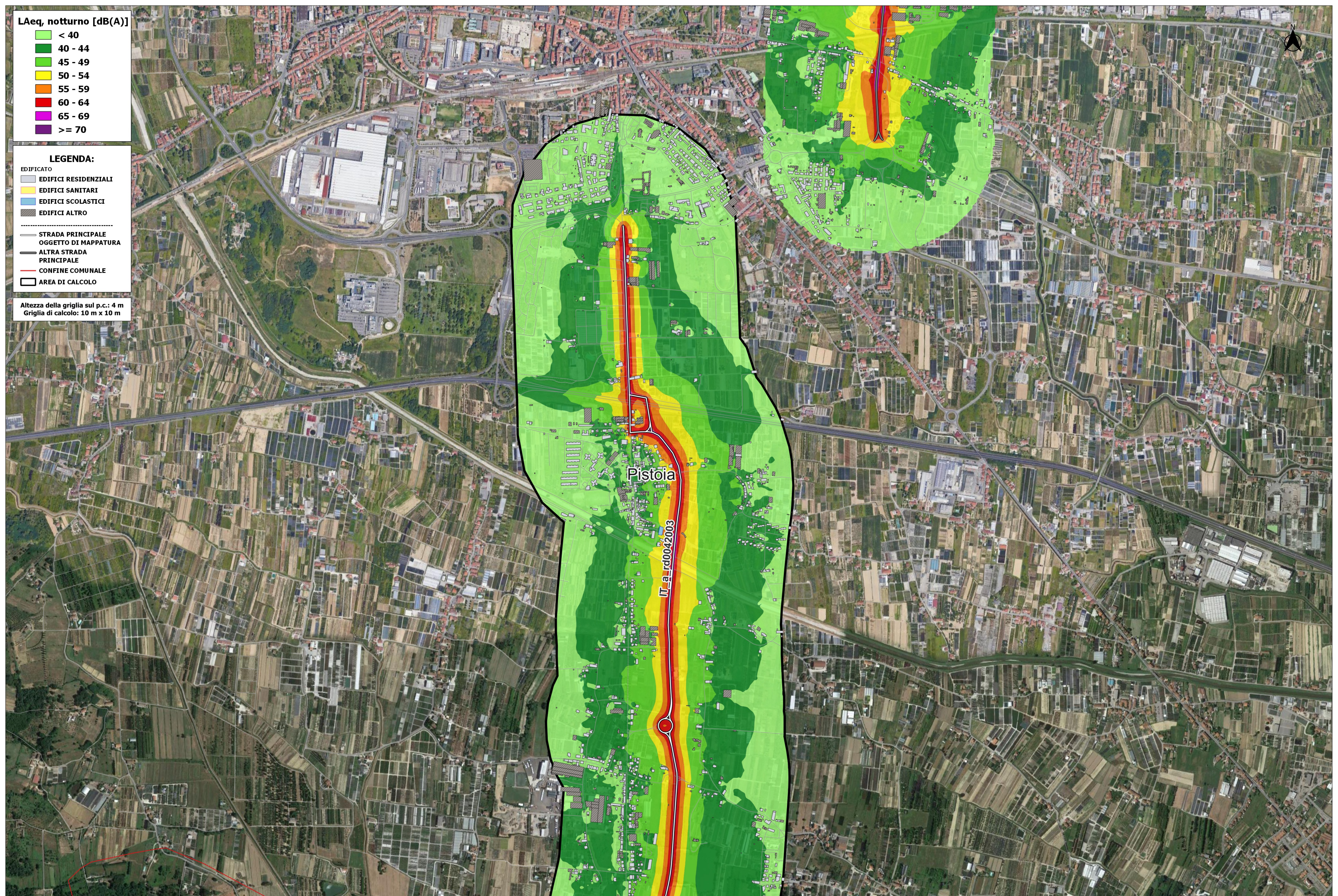
DENOMINAZIONE: SP 9 MONTALBANO

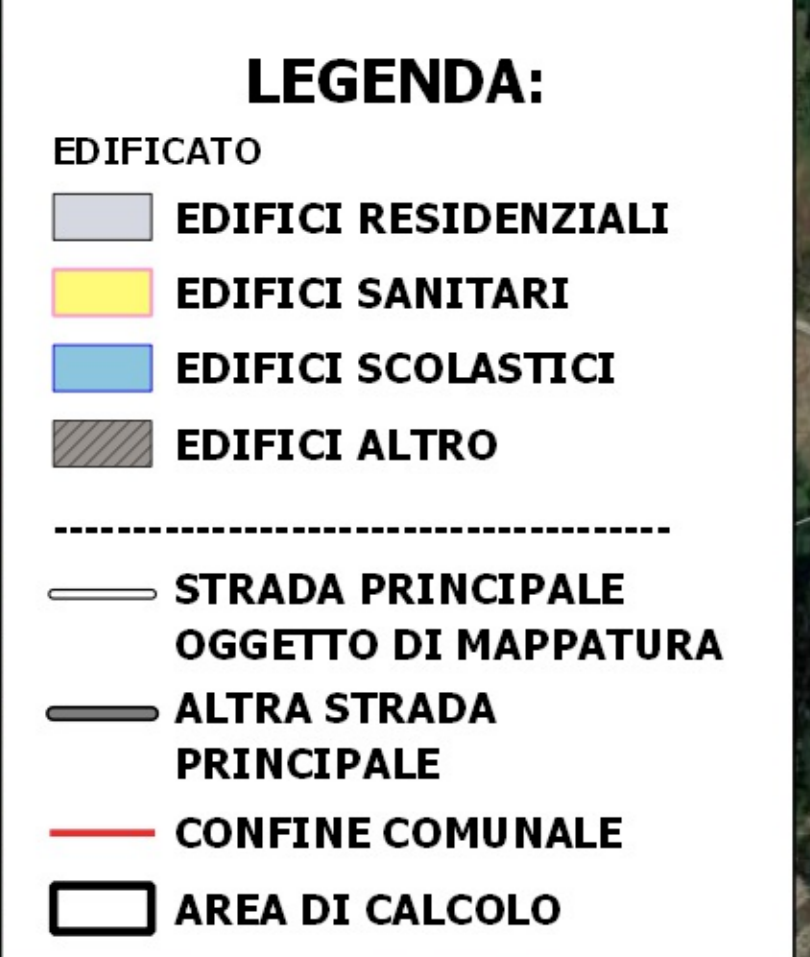
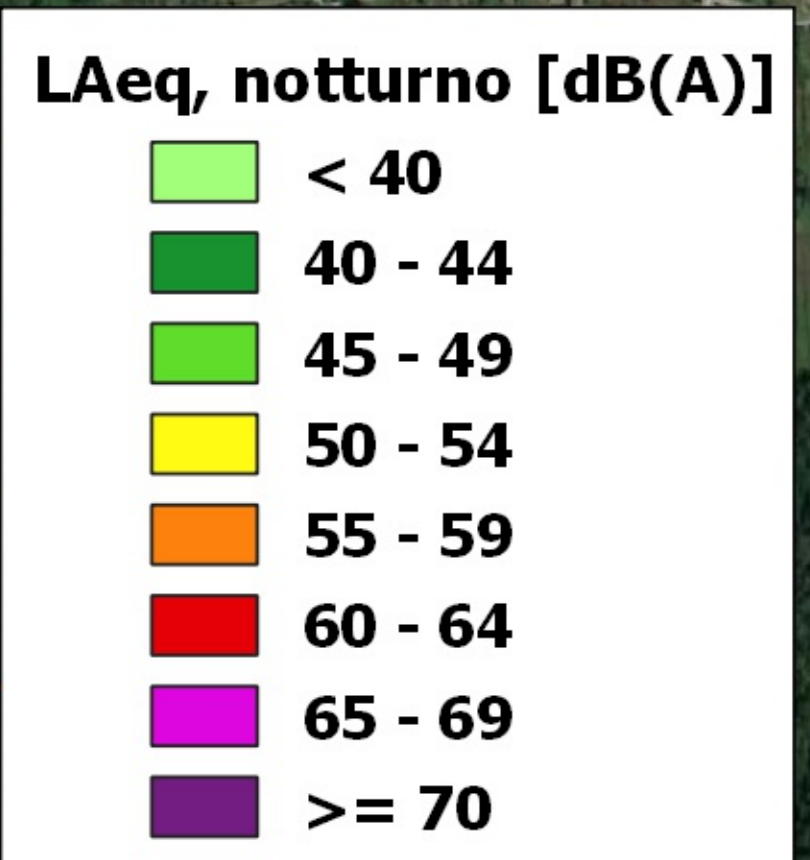
Data di consegna: 15/09/2022
Revisione: Rev.1

FORMATO A0 SCALA 1:5.000

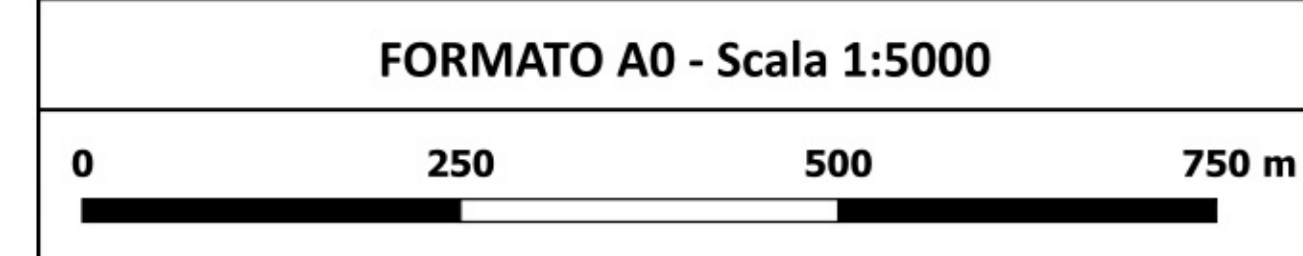
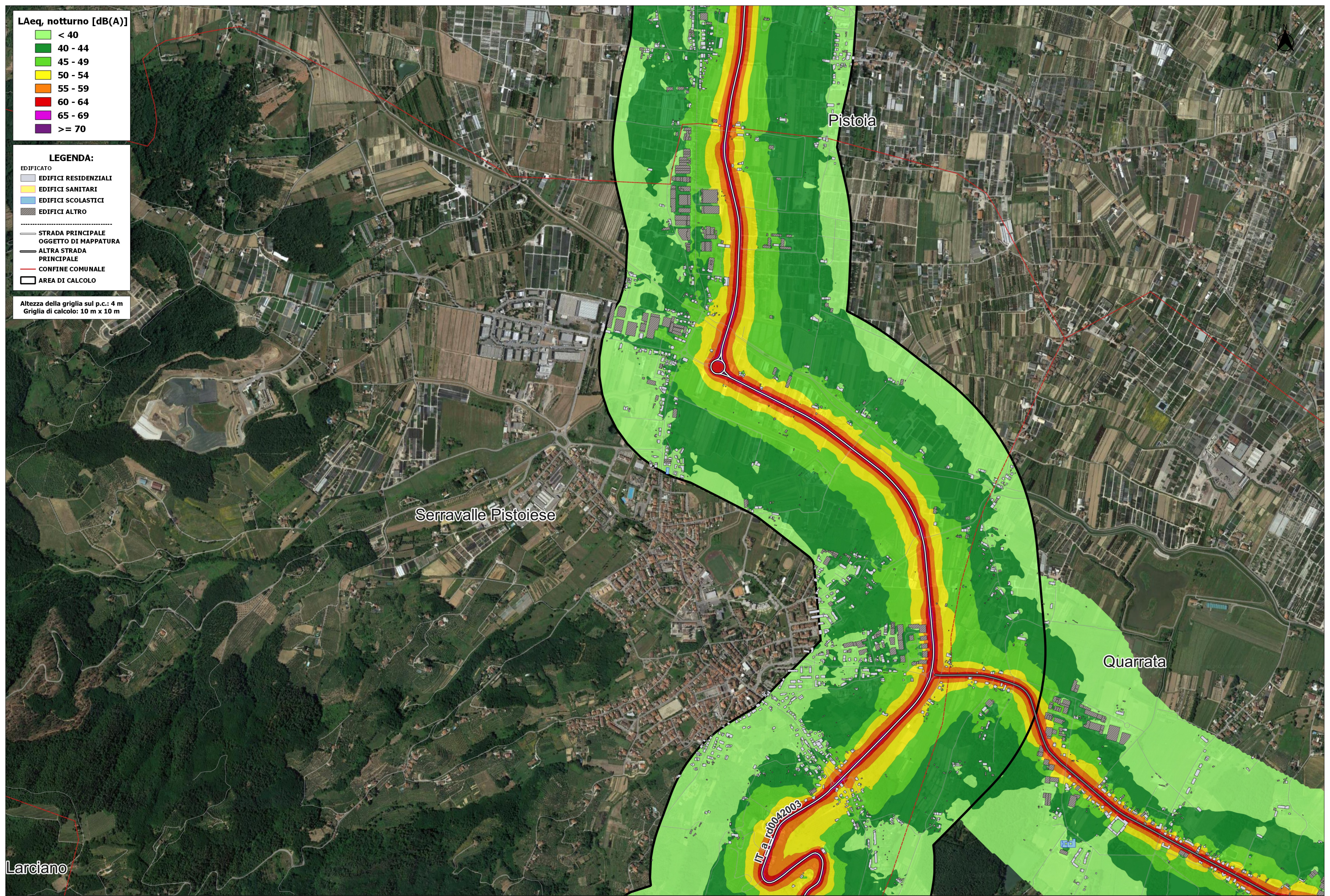


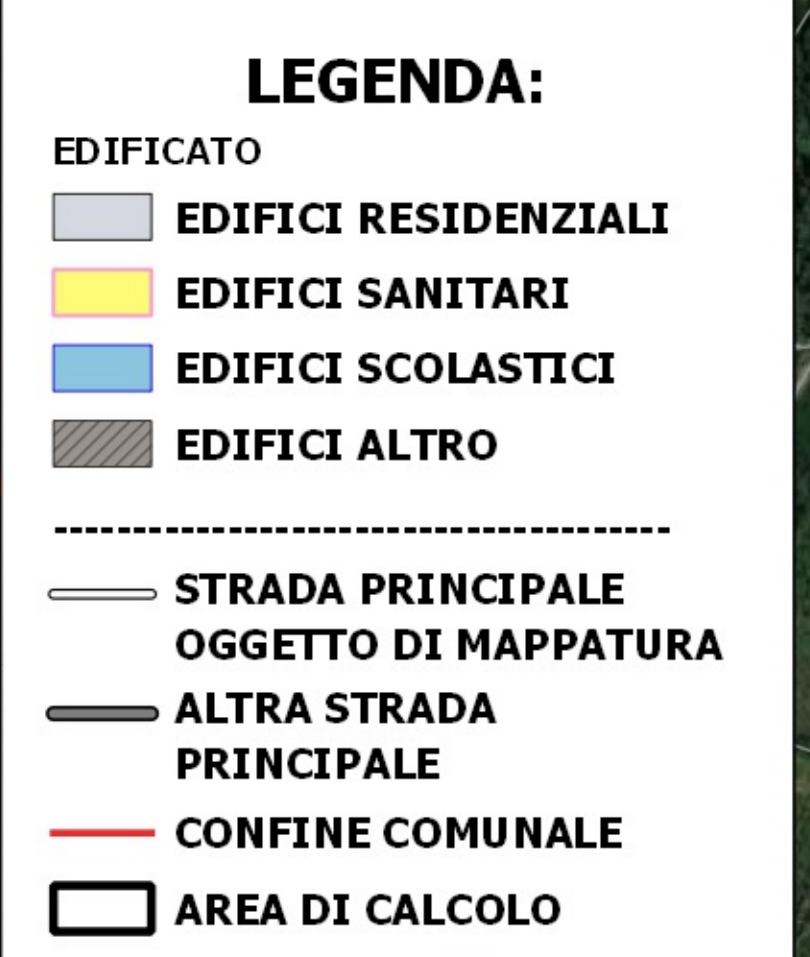
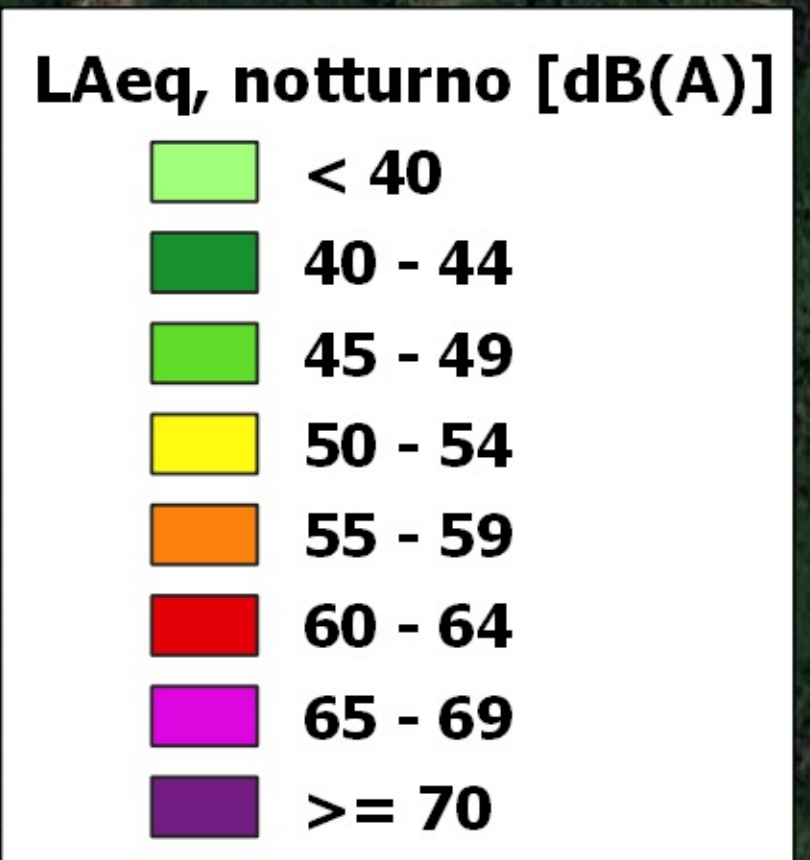
Altezza della griglia sul p.c.: 4 m
Griglia di calcolo: 10 m x 10 m



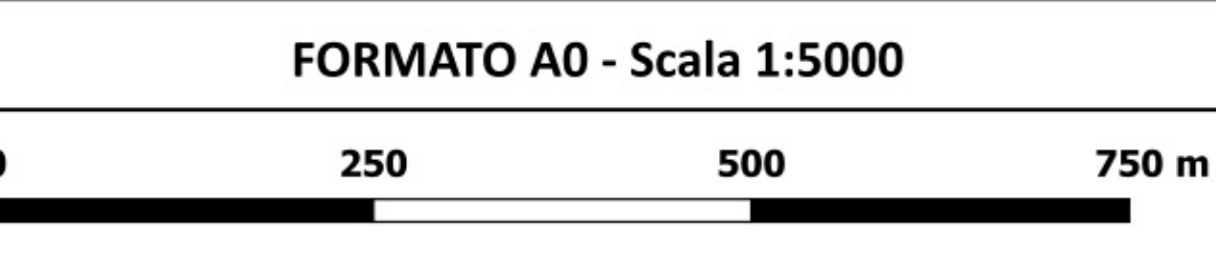
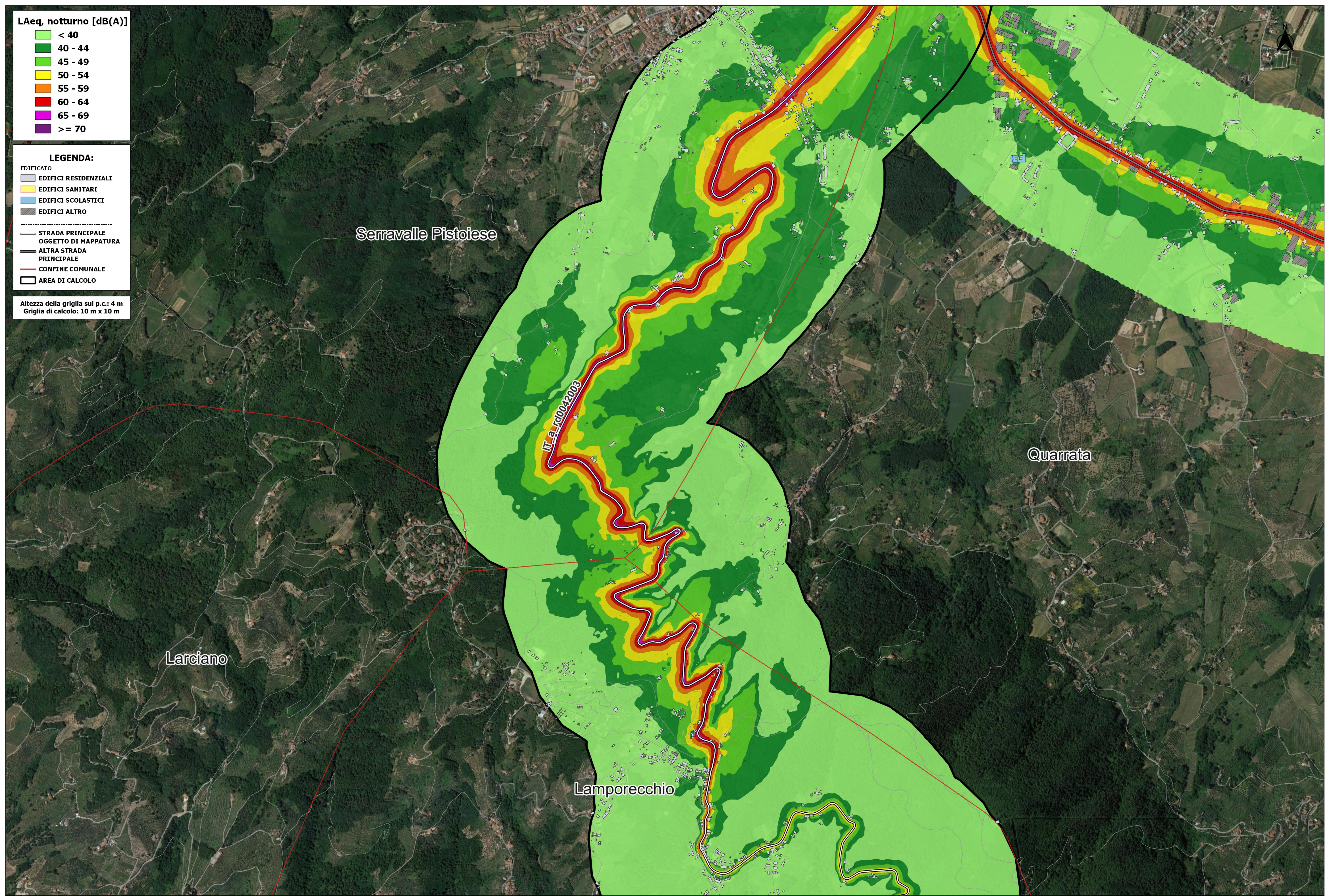


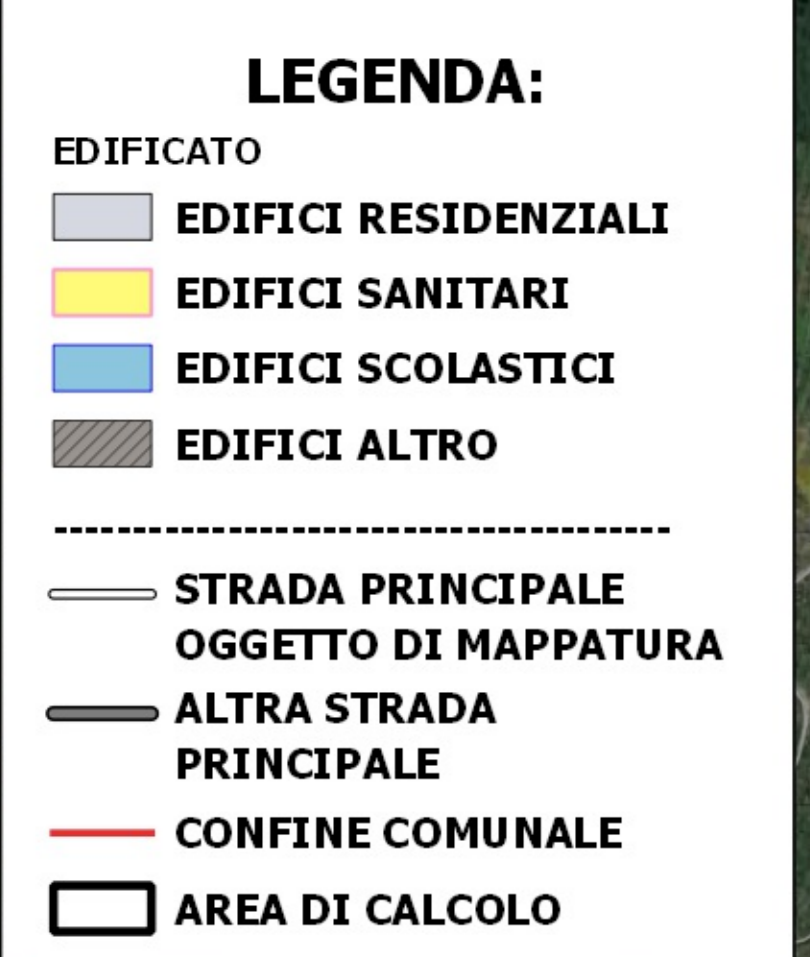
Altezza della griglia sul p.c.: 4 m
 Griglia di calcolo: 10 m x 10 m





Altezza della griglia sul p.c.: 4 m
Griglia di calcolo: 10 m x 10 m





Altezza della griglia sul p.c.: 4 m
Griglia di calcolo: 10 m x 10 m

