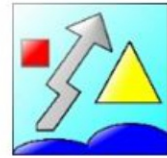


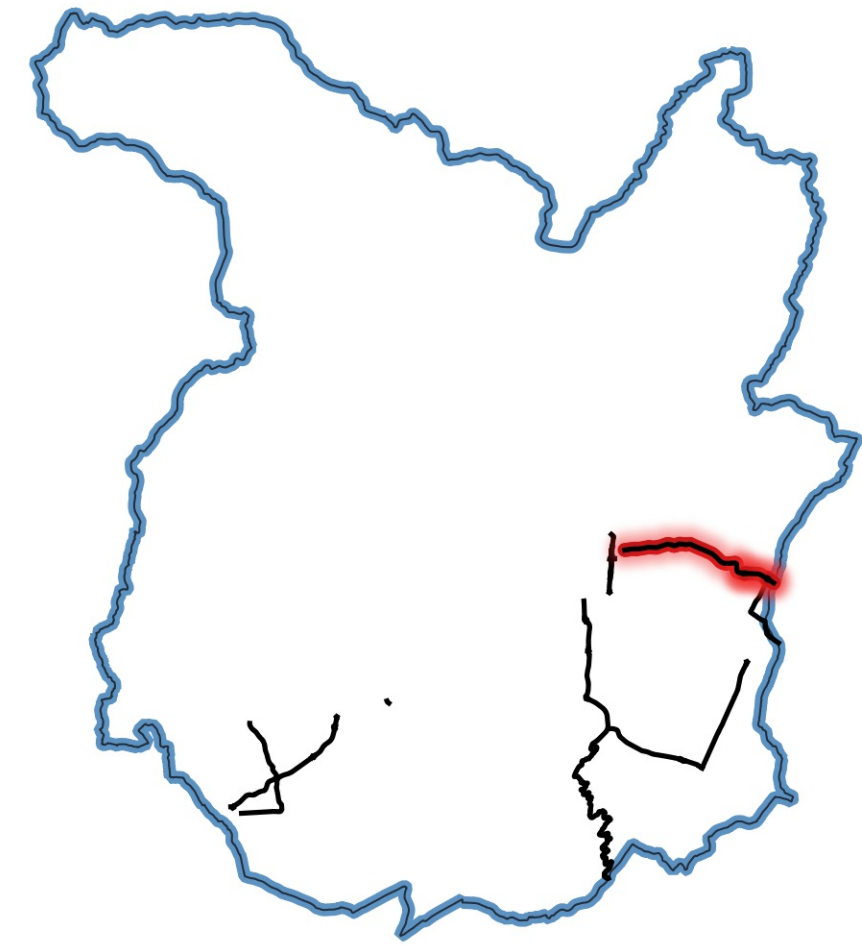


PROVINCIA di PISTOIA

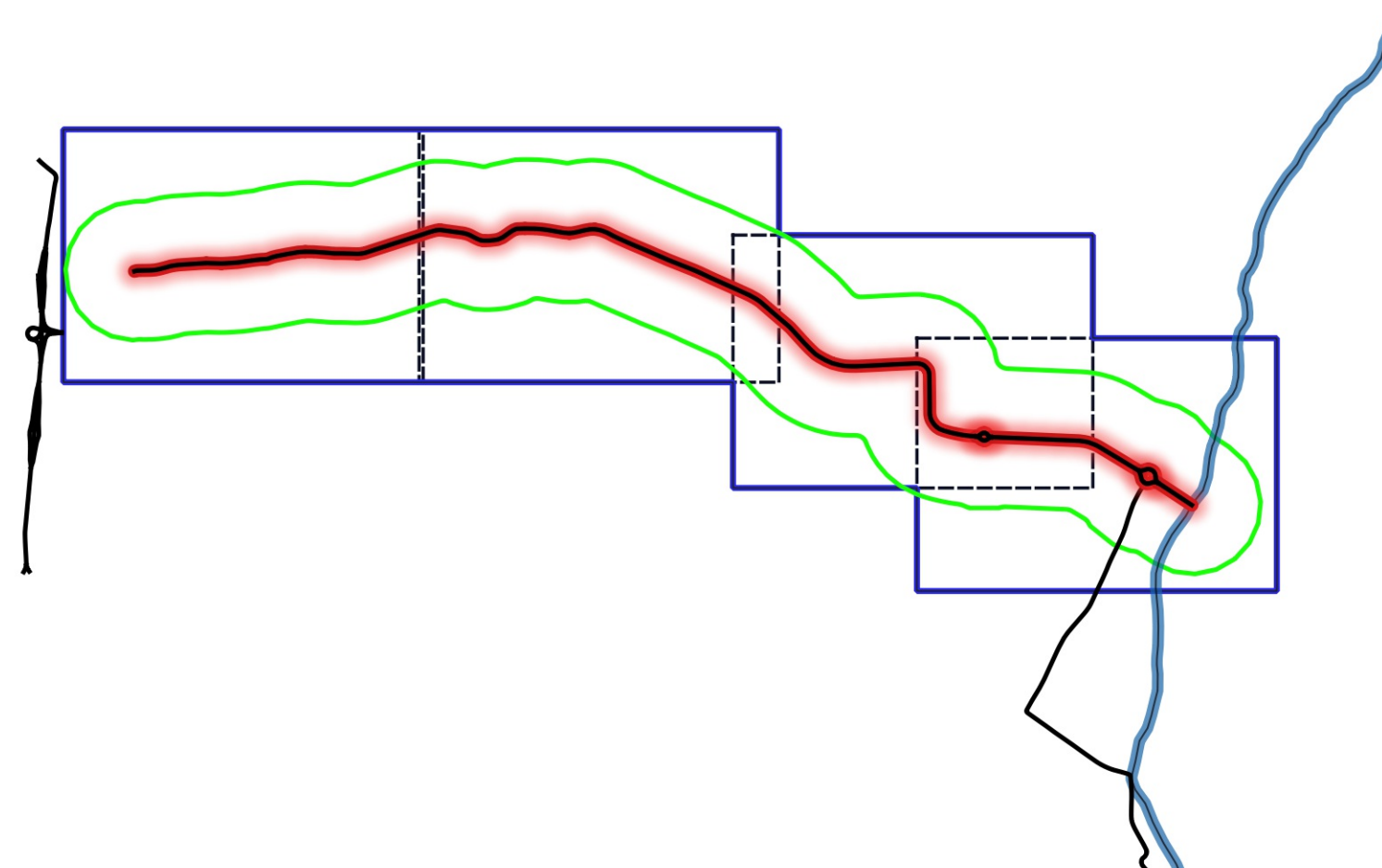


Vie en.ro.se.  
Ingegneria

INQUADRAMENTO TERRITORIALE – PROVINCIA DI PISTOIA



INQUADRAMENTO TERRITORIALE – AREA DI CALCOLO



PROVINCIA DI  
PISTOIA

Decreto Legislativo 19/08/2005, n. 194 "Attuazione della direttiva 2002/49/CE relativa alla determinazione e alla gestione del rumore ambientale"

Piano d'Azione - Terza fase di attuazione (quinquennio 2017/2021)

# PROVINCIA DI PISTOIA

RETE STRADALE PROVINCIALE (assi stradali principali con flusso veicolare superiore ai 3 milioni di veicoli/anno)

IT\_a\_AP\_MRoad0042\_Allegato\_2\_07

Mappe acustiche L<sub>notturno</sub>(22.00-6.00) configurazione ante operam - SP 5 MONTALESE

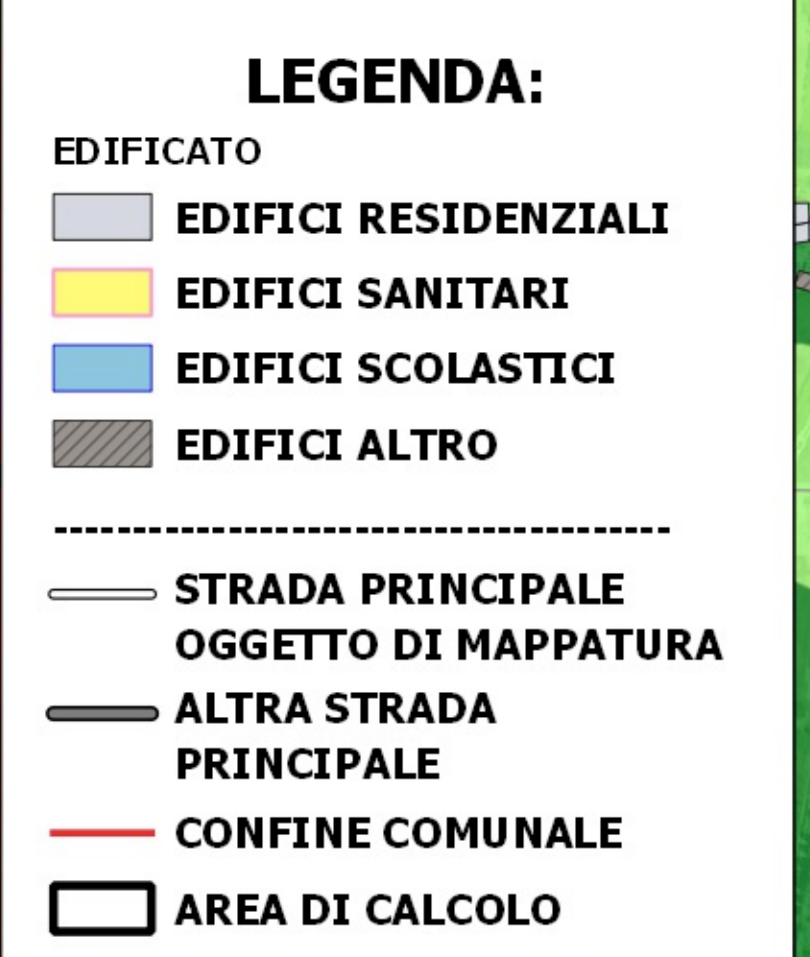
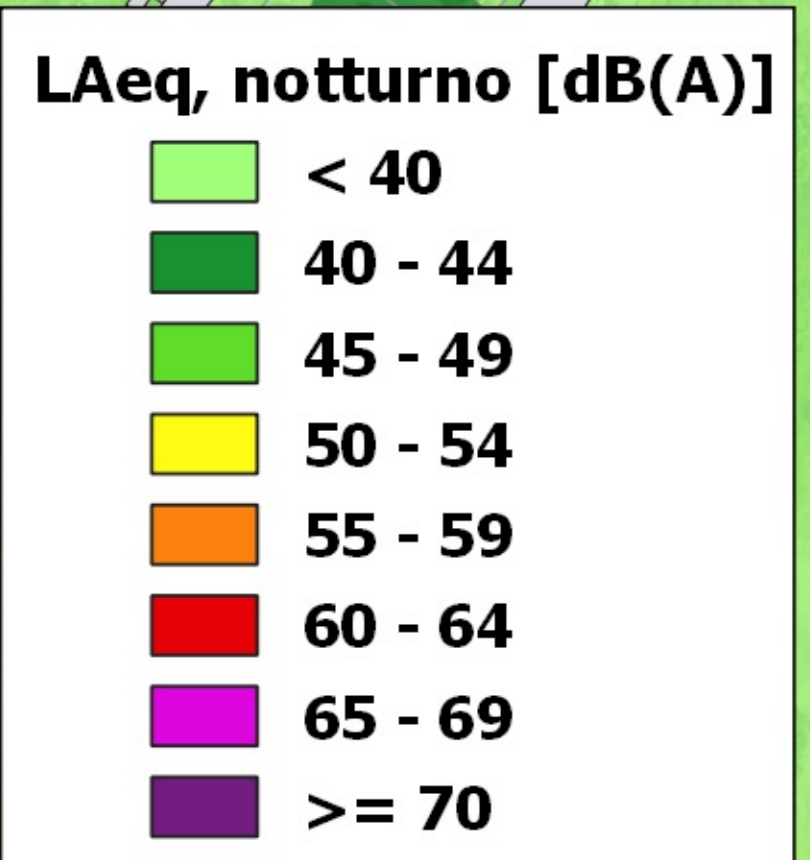
CODICE IDENTIFICATIVO: IT\_a\_rd0042007

DENOMINAZIONE: SP 5 MONTALESE

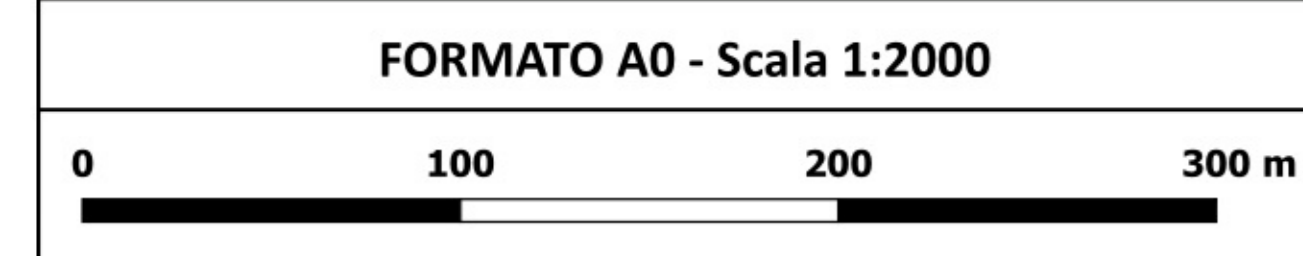
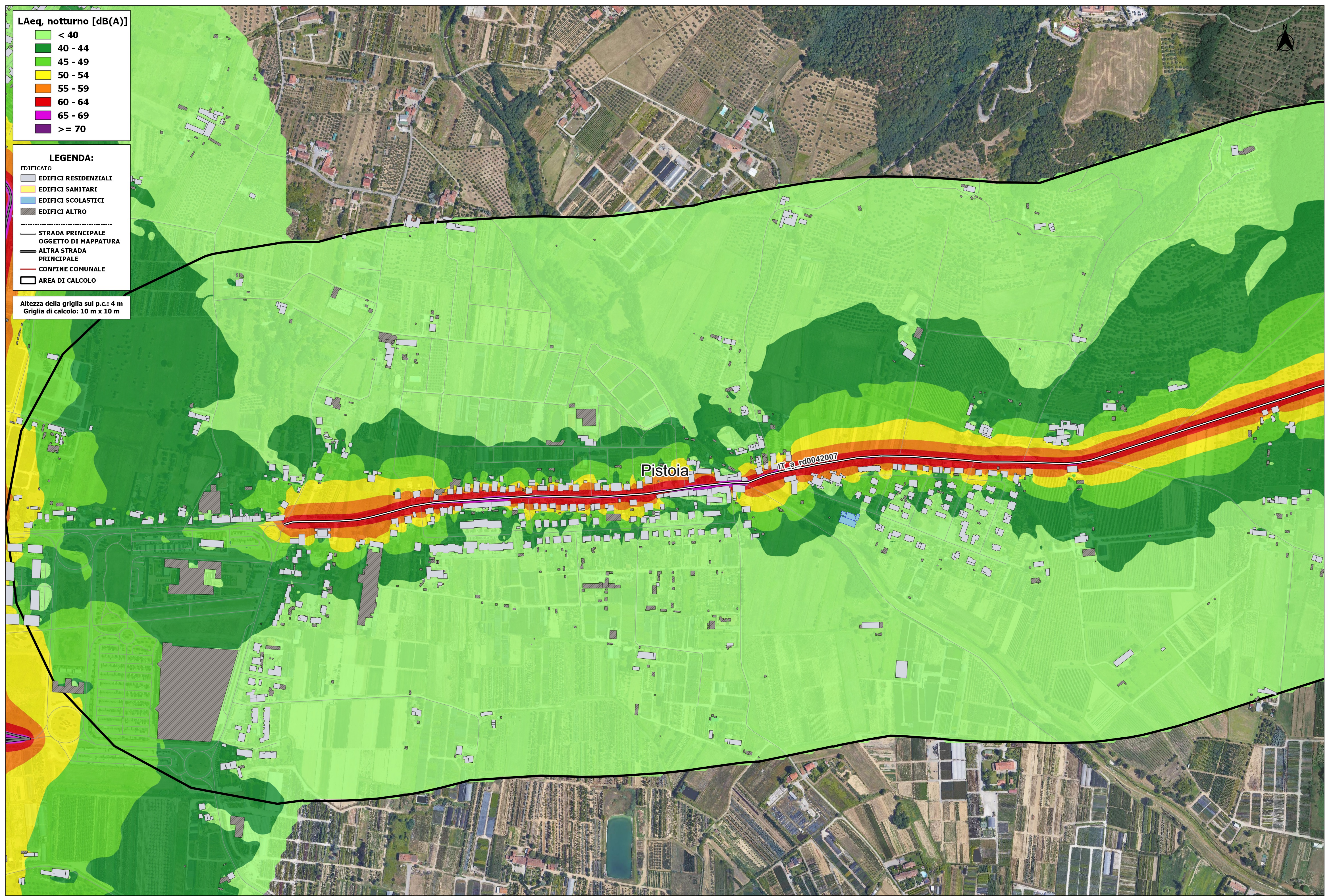
Data di consegna: 15/09/2022  
Revisione: Rev.1

FORMATO A0 SCALA 1:2.000

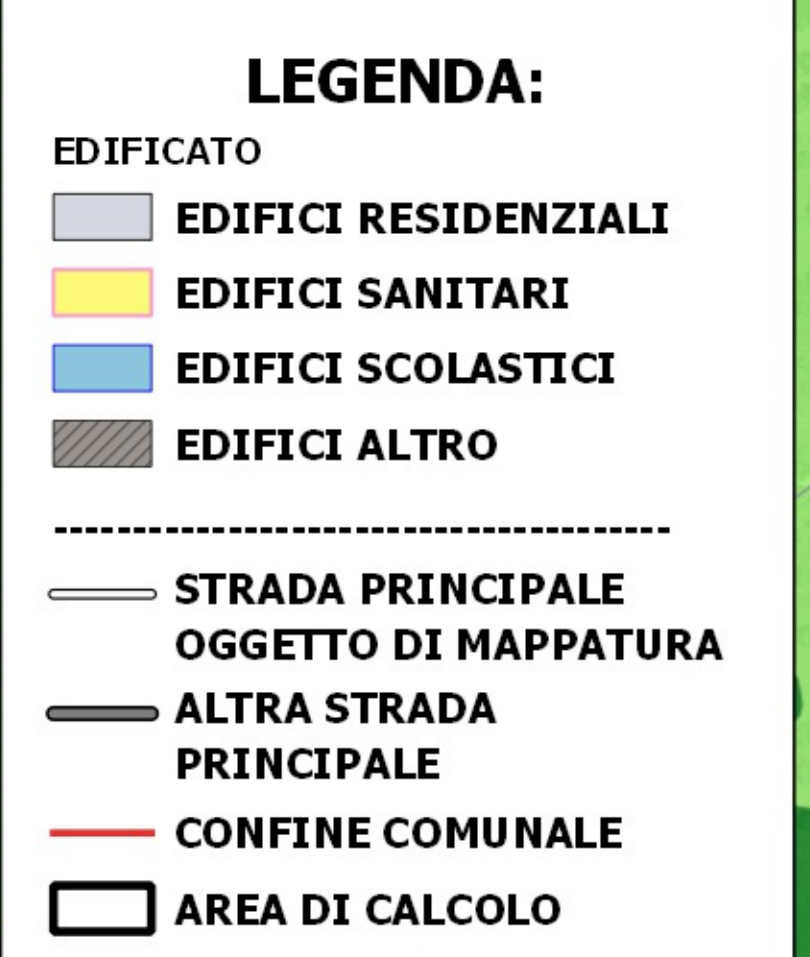
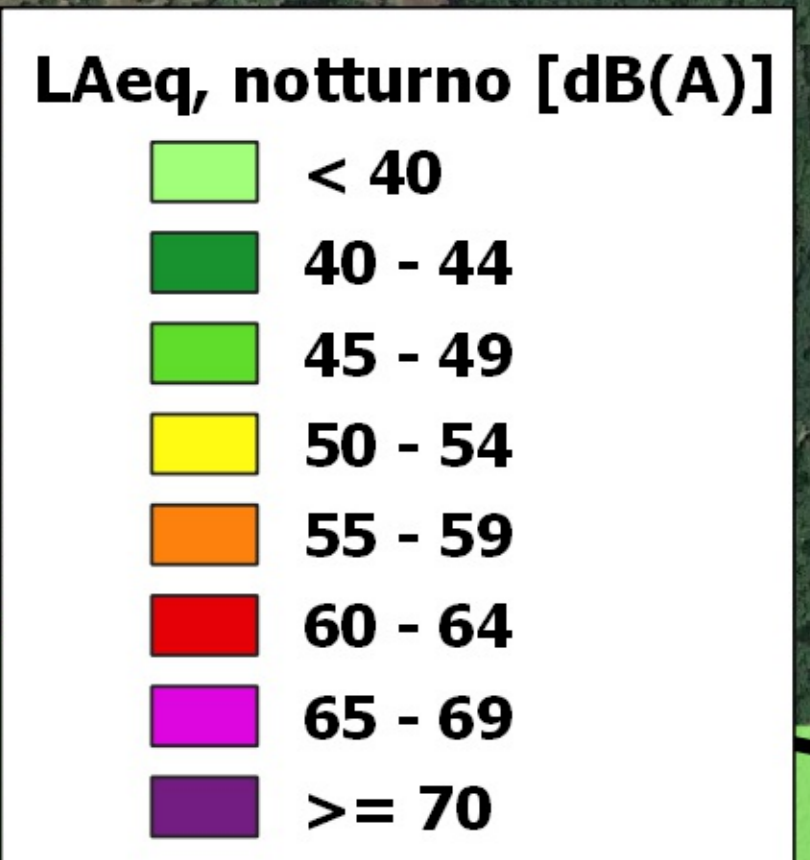




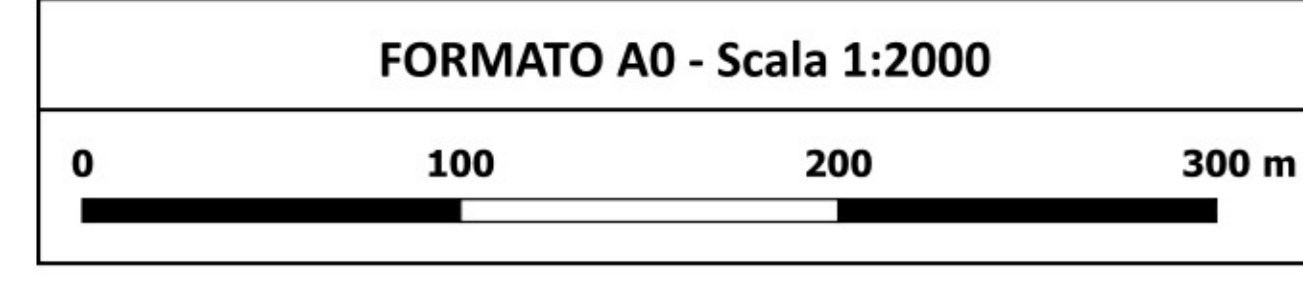
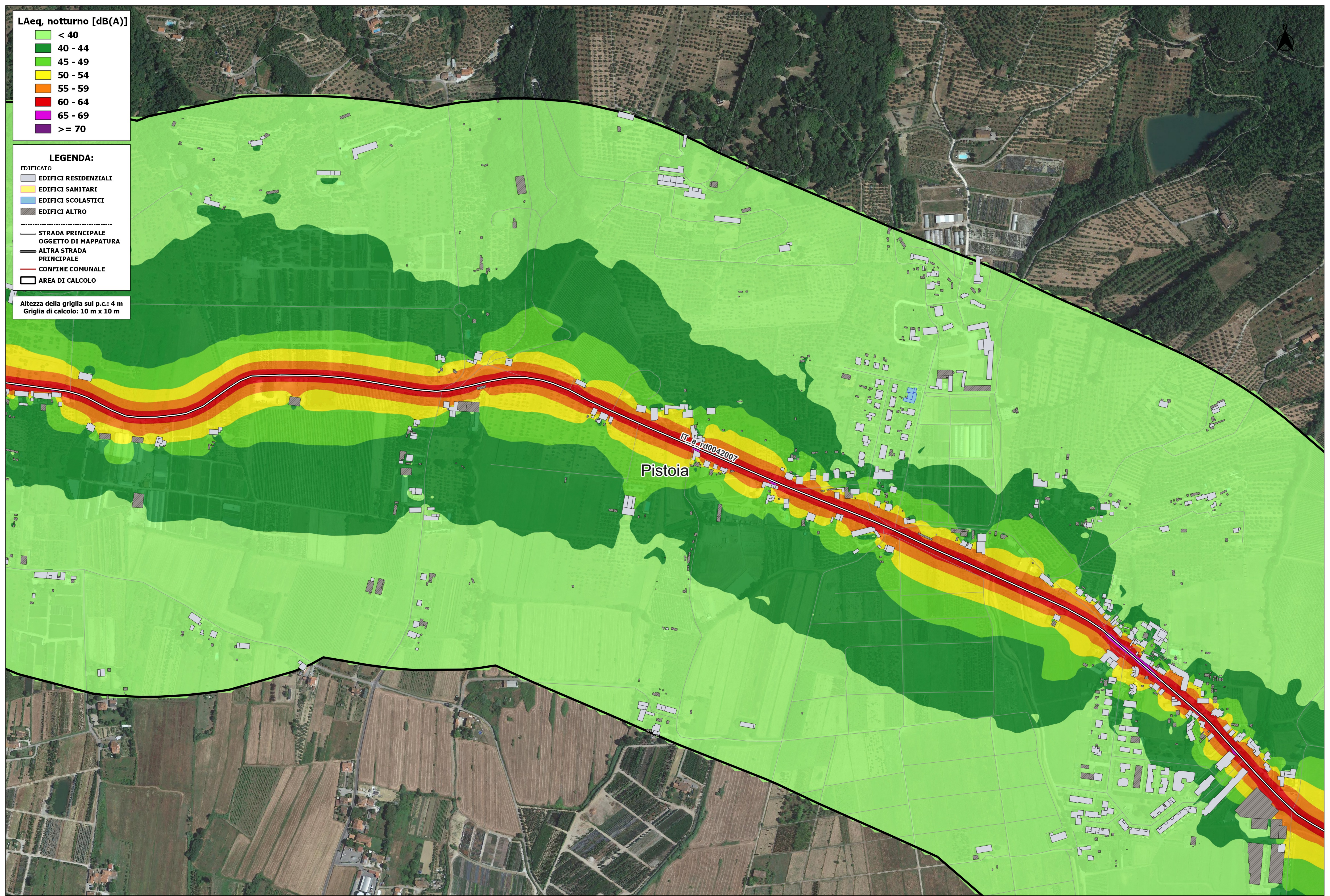
Altezza della griglia sul p.c.: 4 m  
 Griglia di calcolo: 10 m x 10 m



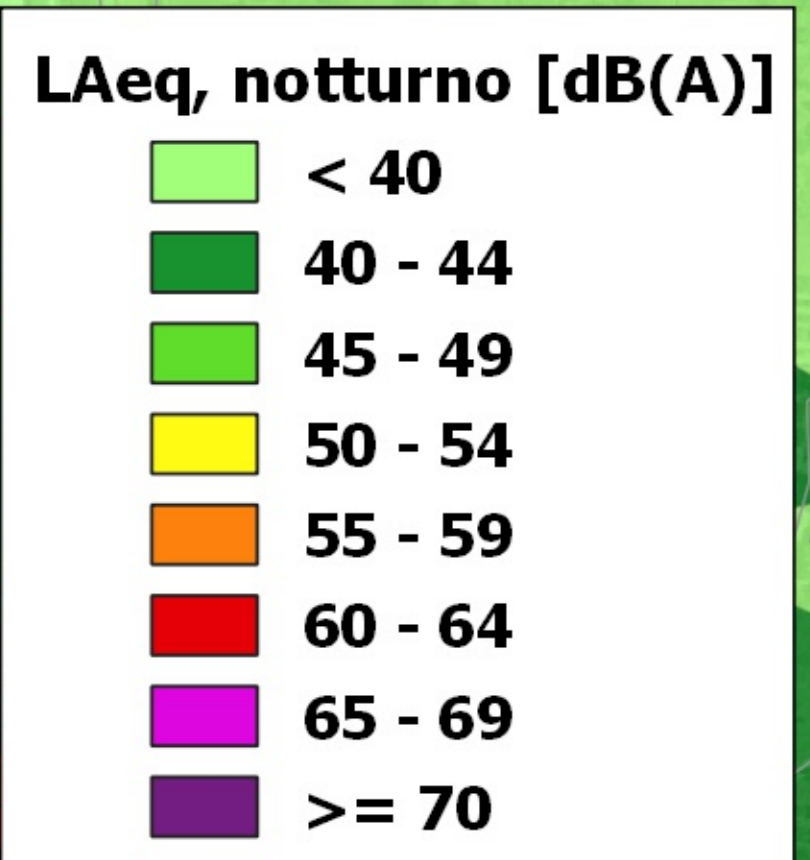




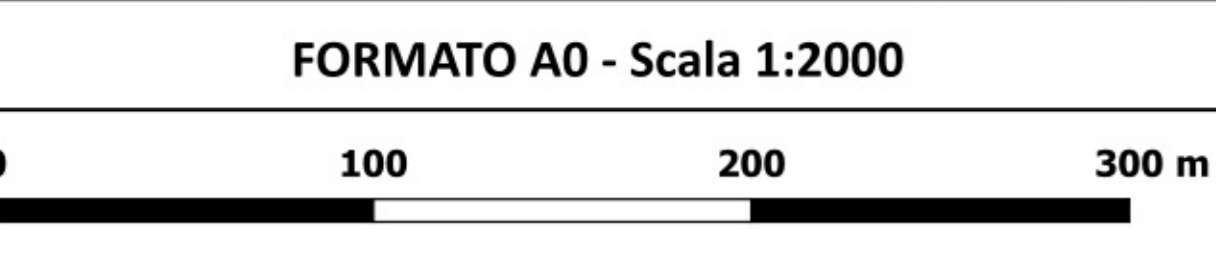
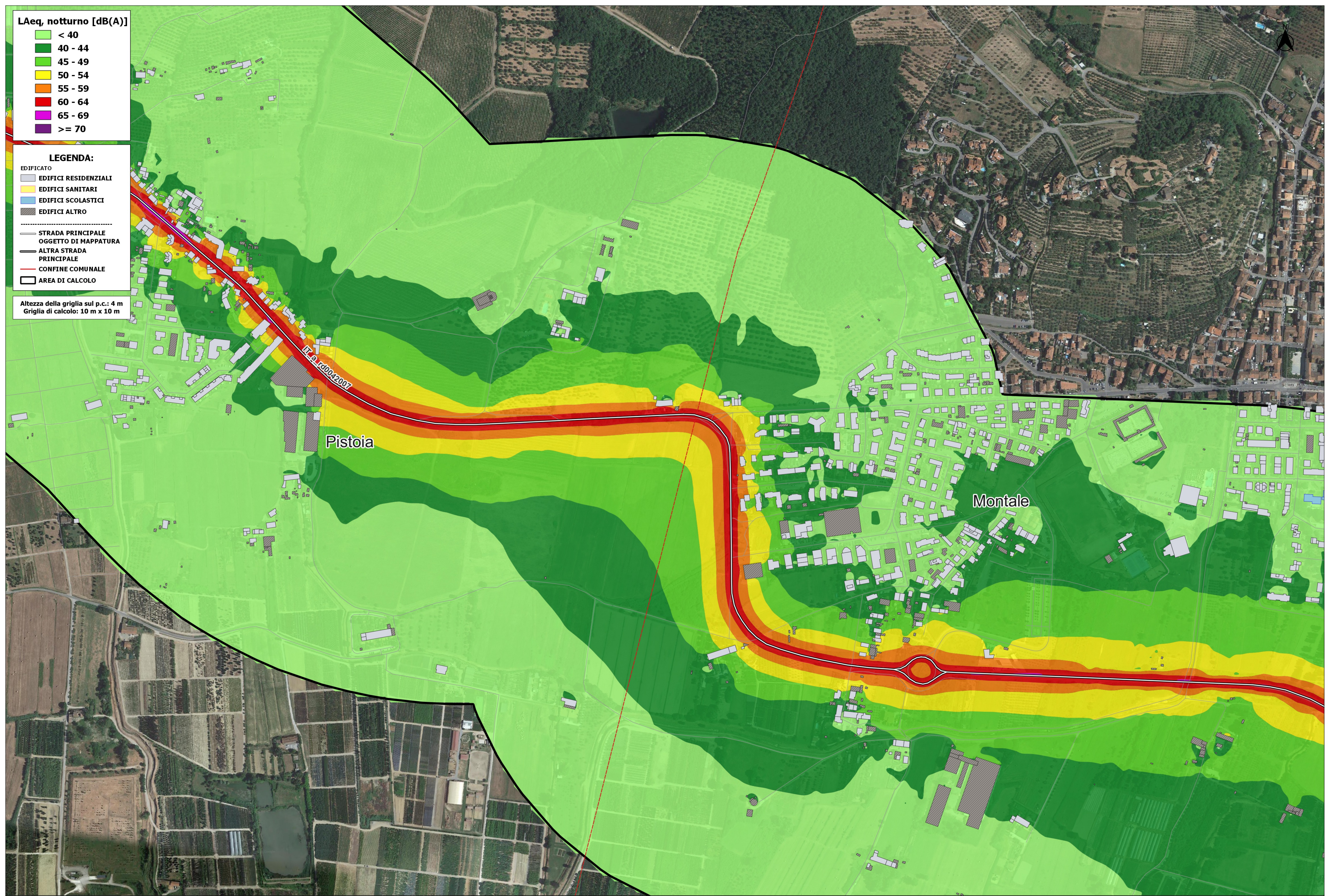
Altezza della griglia sul p.c.: 4 m  
Griglia di calcolo: 10 m x 10 m



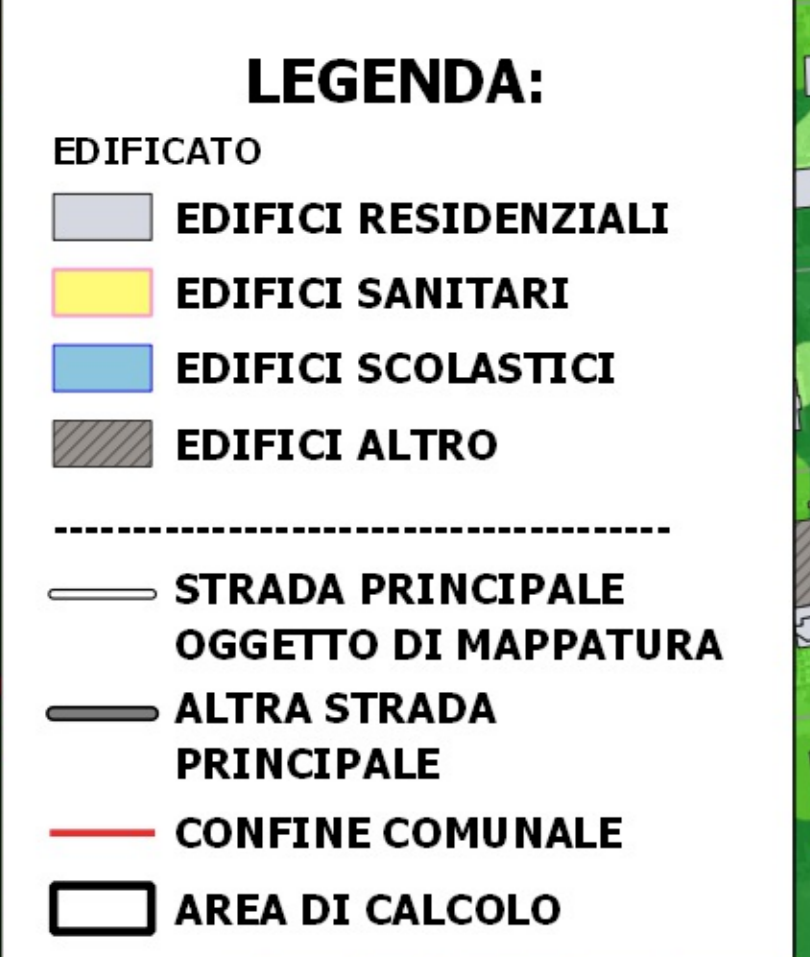
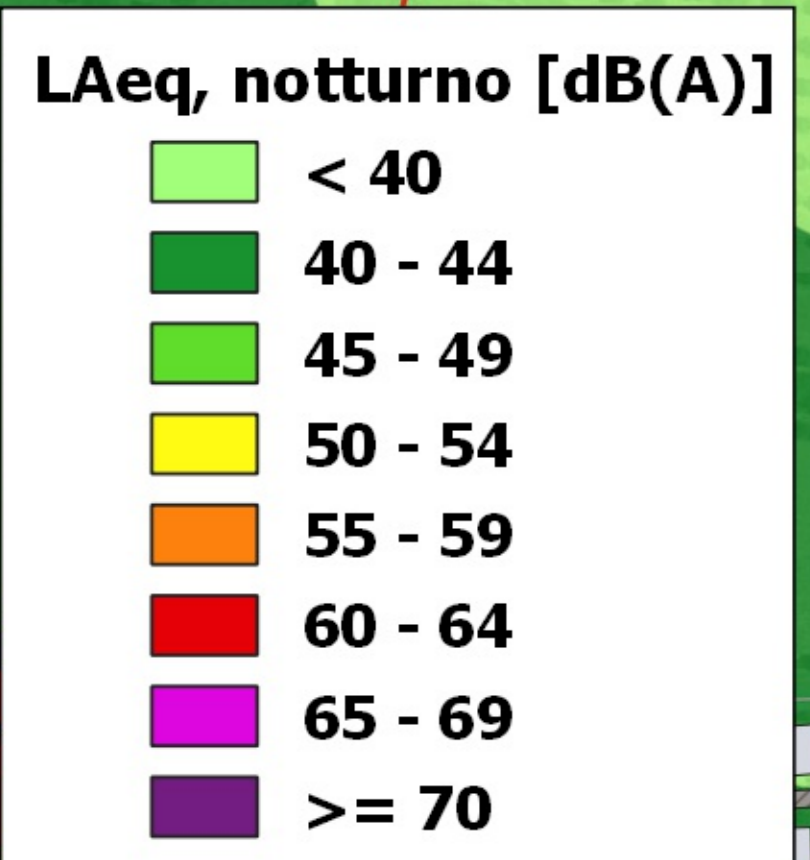




Altezza della griglia sul p.c.: 4 m  
Griglia di calcolo: 10 m x 10 m







Altezza della griglia sul p.c.: 4 m  
Griglia di calcolo: 10 m x 10 m

