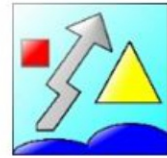


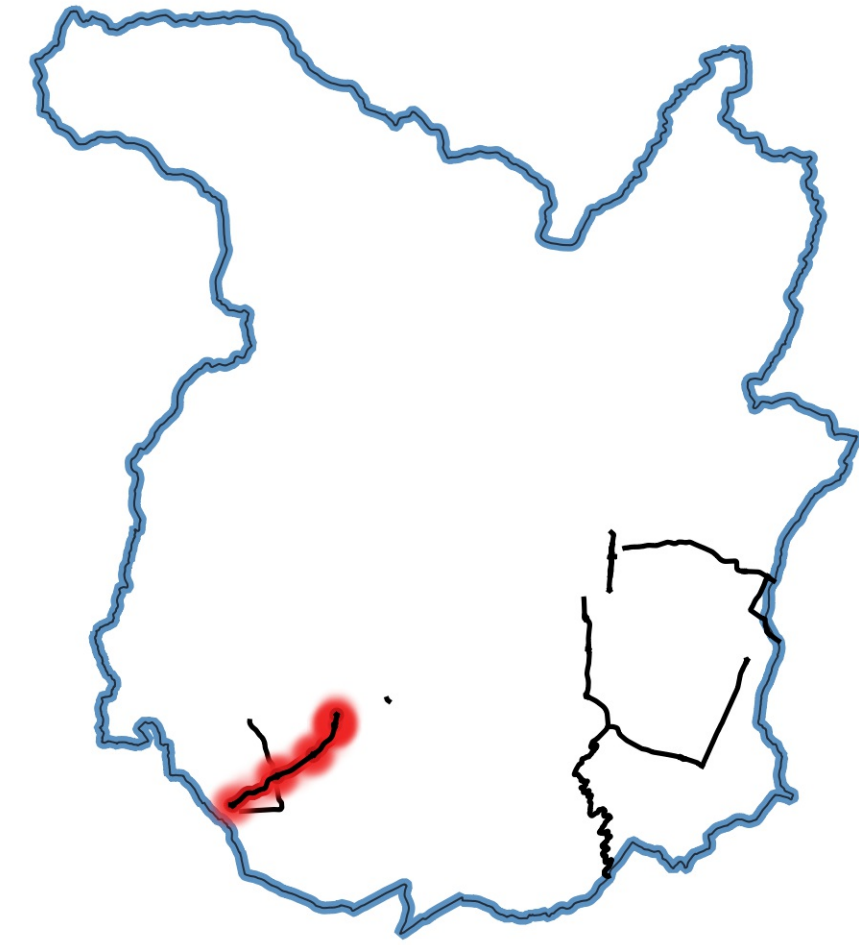


PROVINCIA di PISTOIA

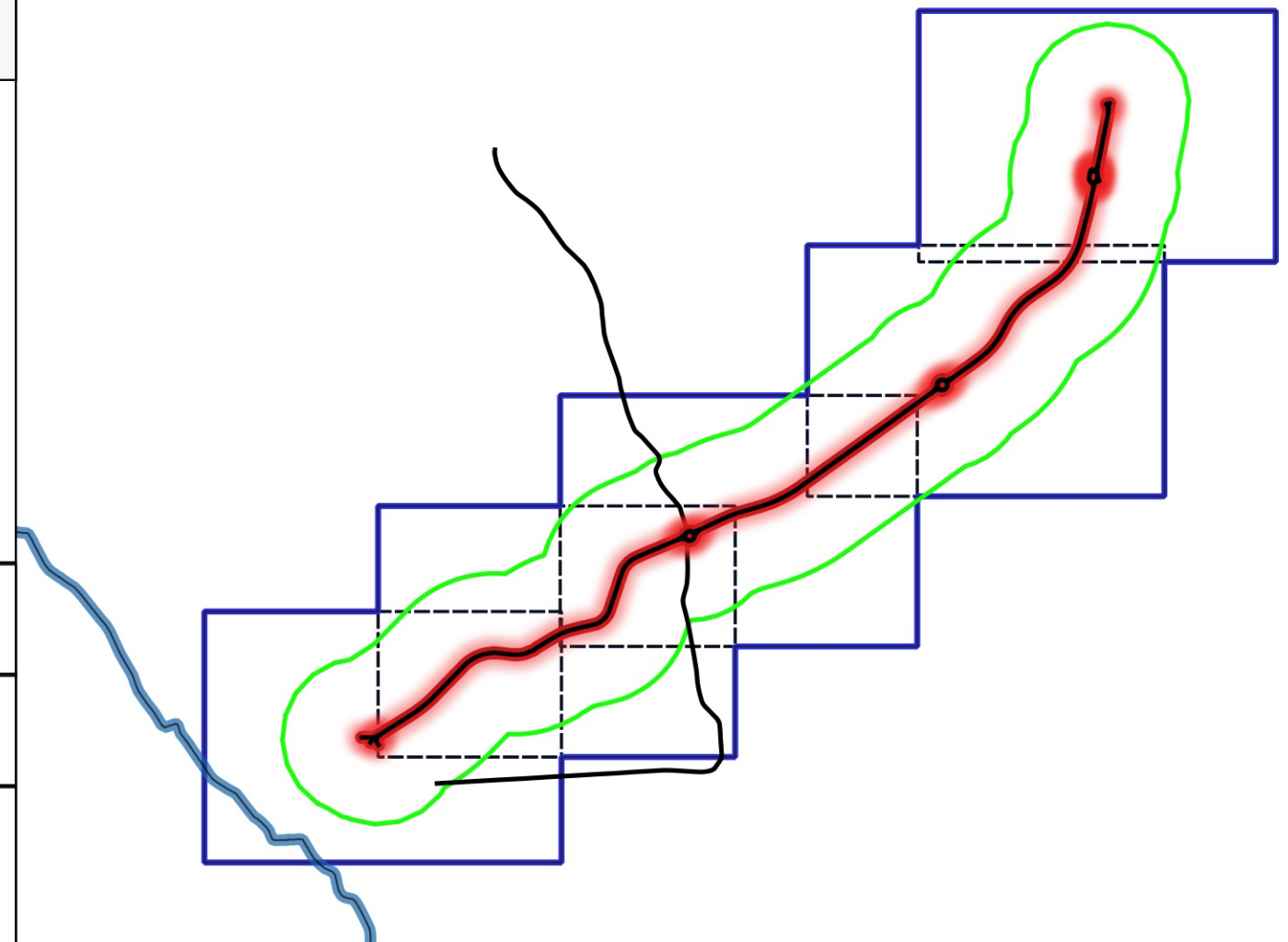


Vie en.ro.se.  
Ingegneria

INQUADRAMENTO TERRITORIALE – PROVINCIA DI PISTOIA



INQUADRAMENTO TERRITORIALE – AREA DI CALCOLO



PROVINCIA DI  
PISTOIA

Decreto Legislativo 19/08/2005, n. 194 "Attuazione della direttiva 2002/49/CE relativa alla determinazione e alla gestione del rumore ambientale"

Piano d'Azione - Terza fase di attuazione (quinquennio 2017/2021)

# PROVINCIA DI PISTOIA

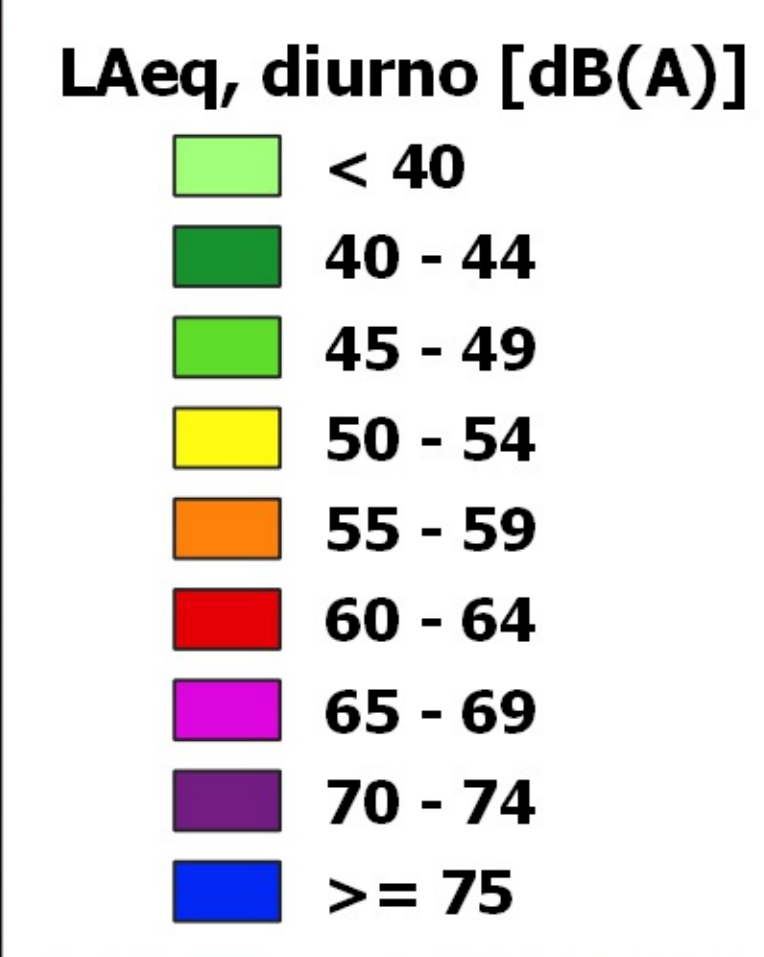
RETE STRADALE PROVINCIALE (assi stradali principali con flusso veicolare superiore ai 3 milioni di veicoli/anno)

IT\_a\_AP\_MRoad0042\_Allegato\_3\_02  
Mappe acustiche L<sub>diurno</sub> (6.00-22.00) configurazione post operam - SP 26 CAMPORCIONI

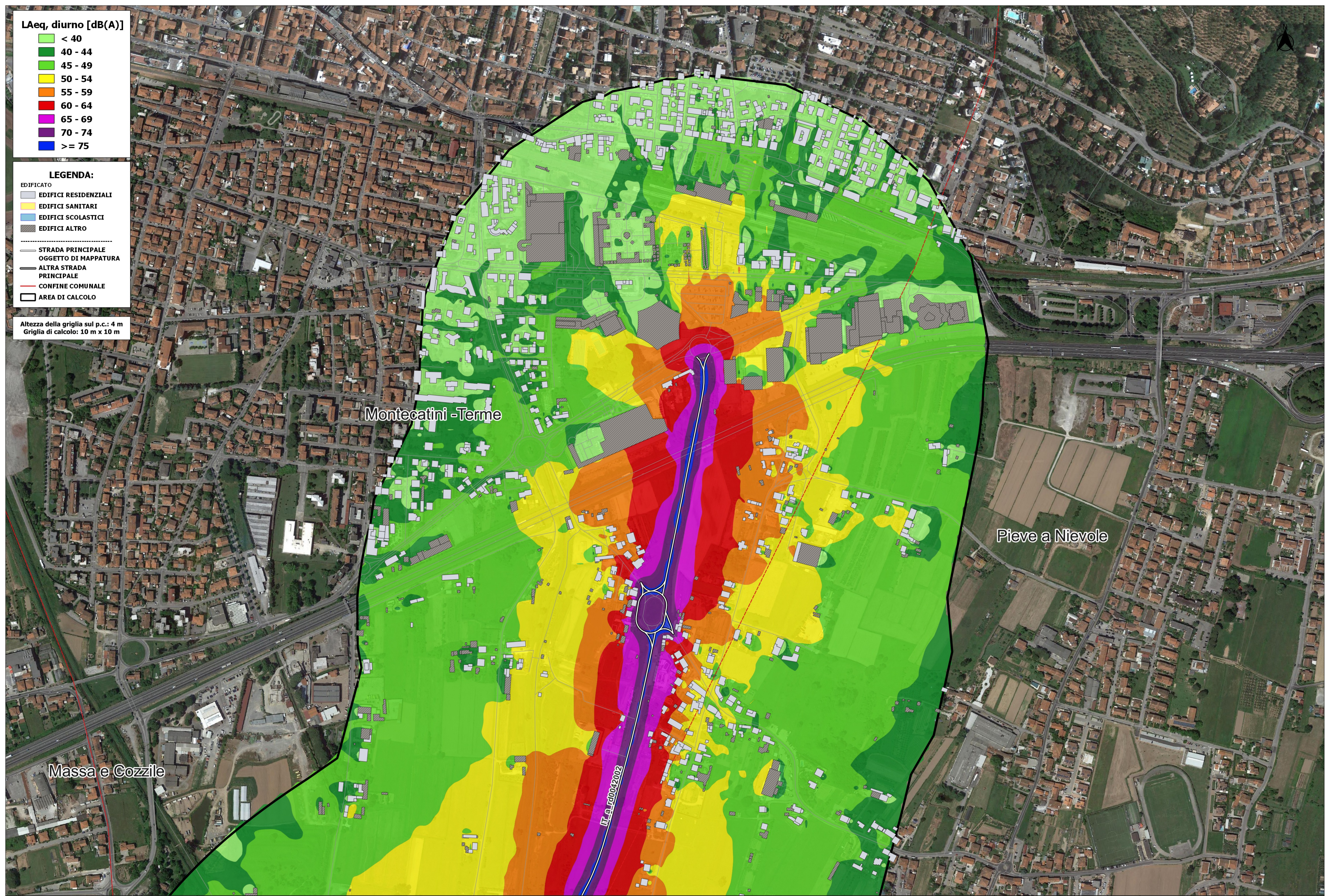
CODICE IDENTIFICATIVO: IT\_a\_rd0042002  
DENOMINAZIONE: SP 26 CAMPORCIONI

Data di consegna: 15/09/2022  
Revisione: Rev.1

FORMATO A0 SCALA 1:2.000



Altezza della griglia sul p.c.: 4 m  
Griglia di calcolo: 10 m x 10 m

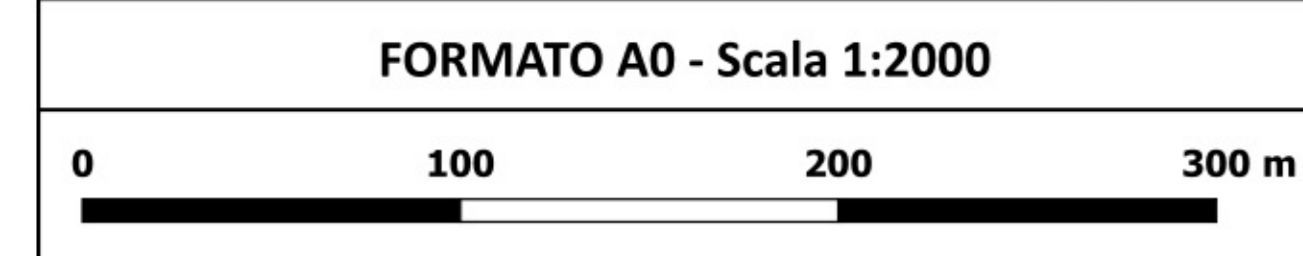


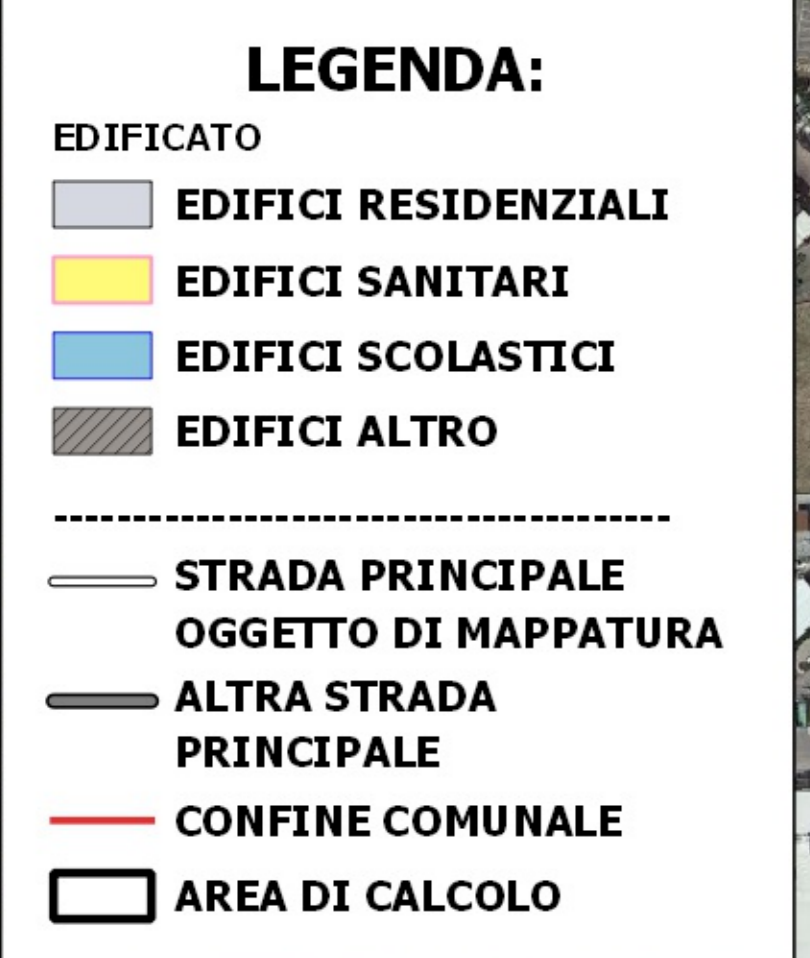
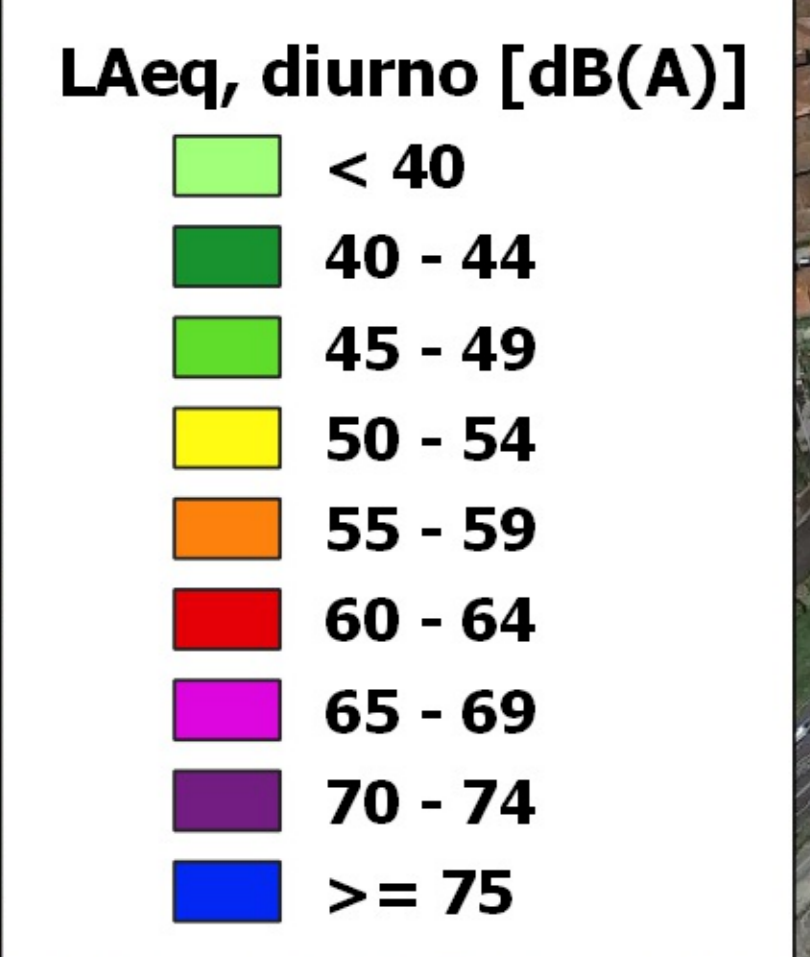
Montecatini -Terme

Pieve a Nievole

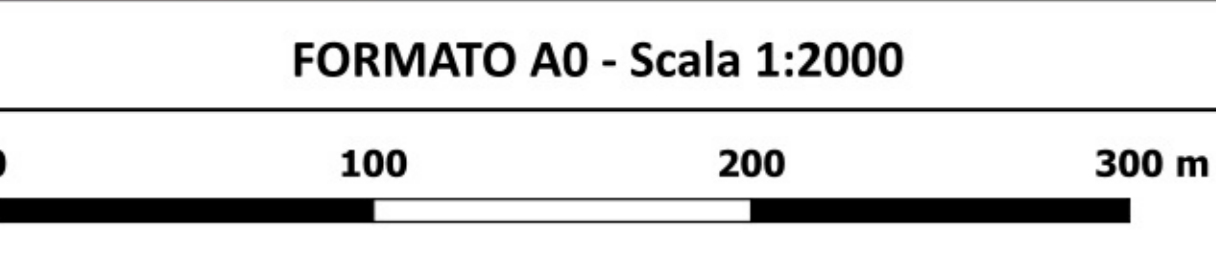
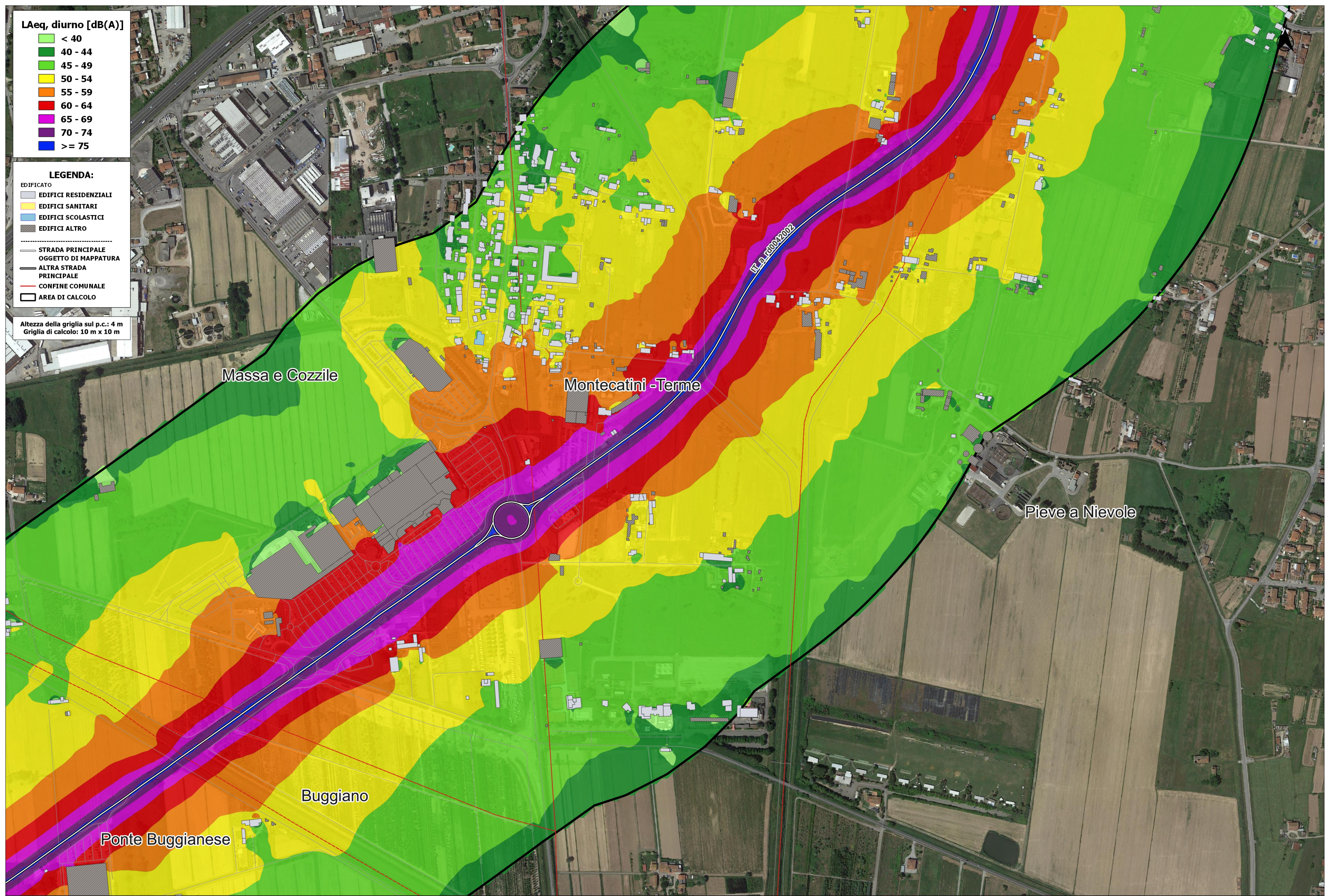
Massa e Cozzile

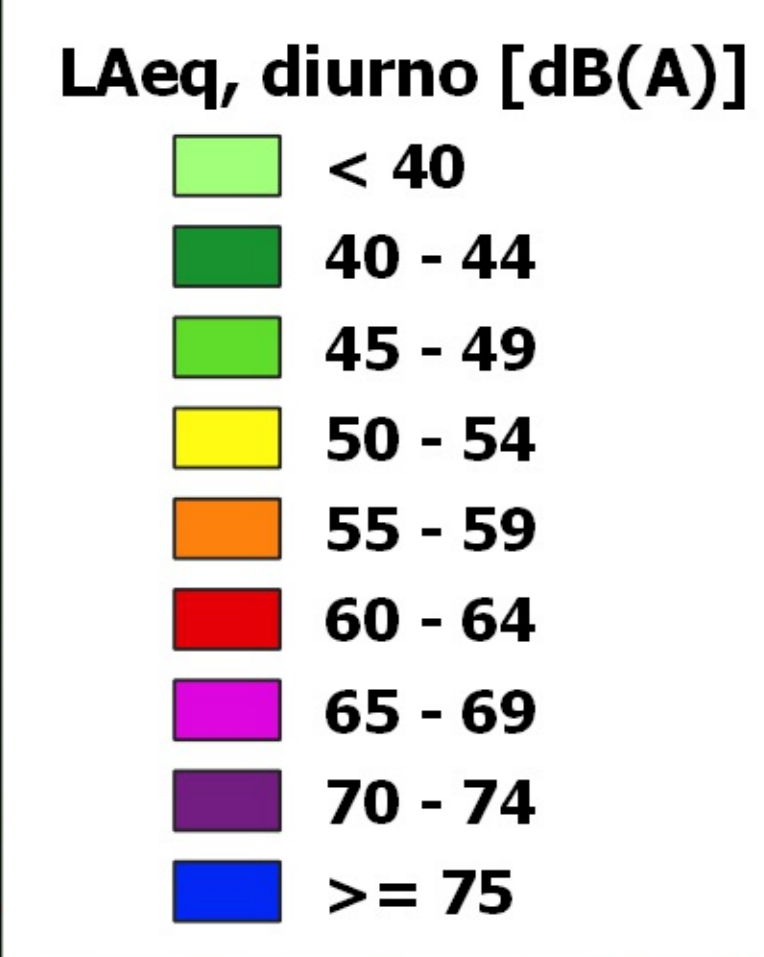
IT\_a\_rd0042002



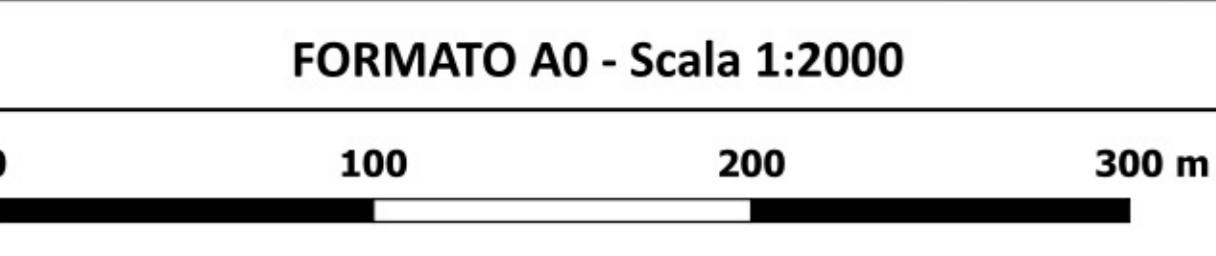
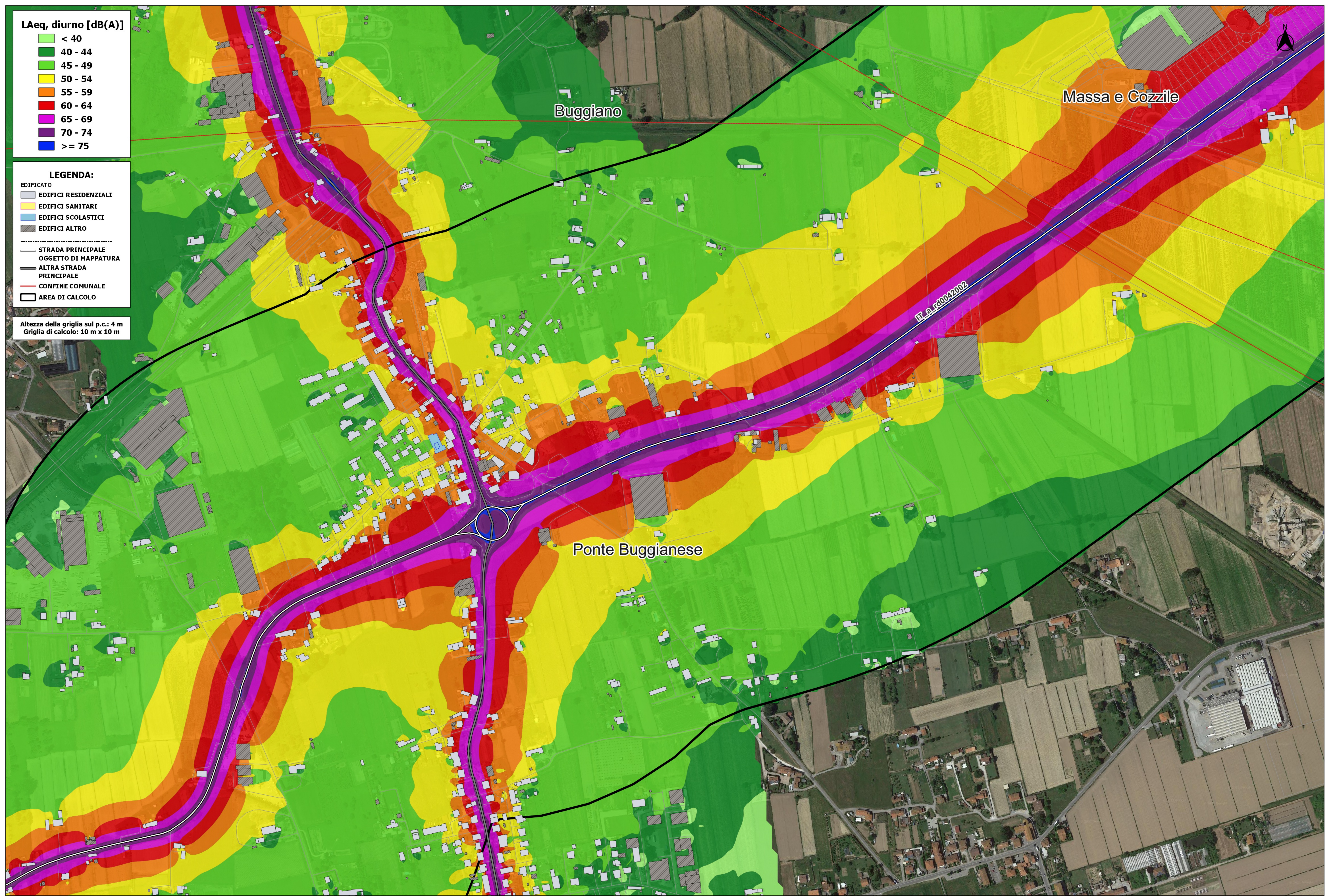


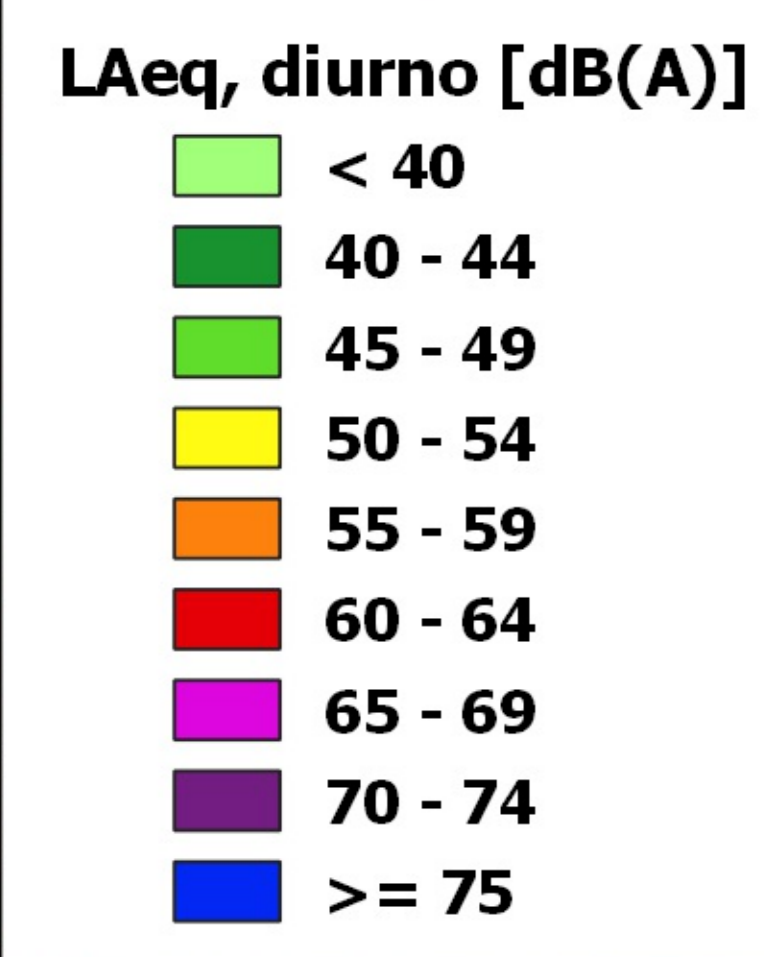
Altezza della griglia sul p.c.: 4 m  
Griglia di calcolo: 10 m x 10 m



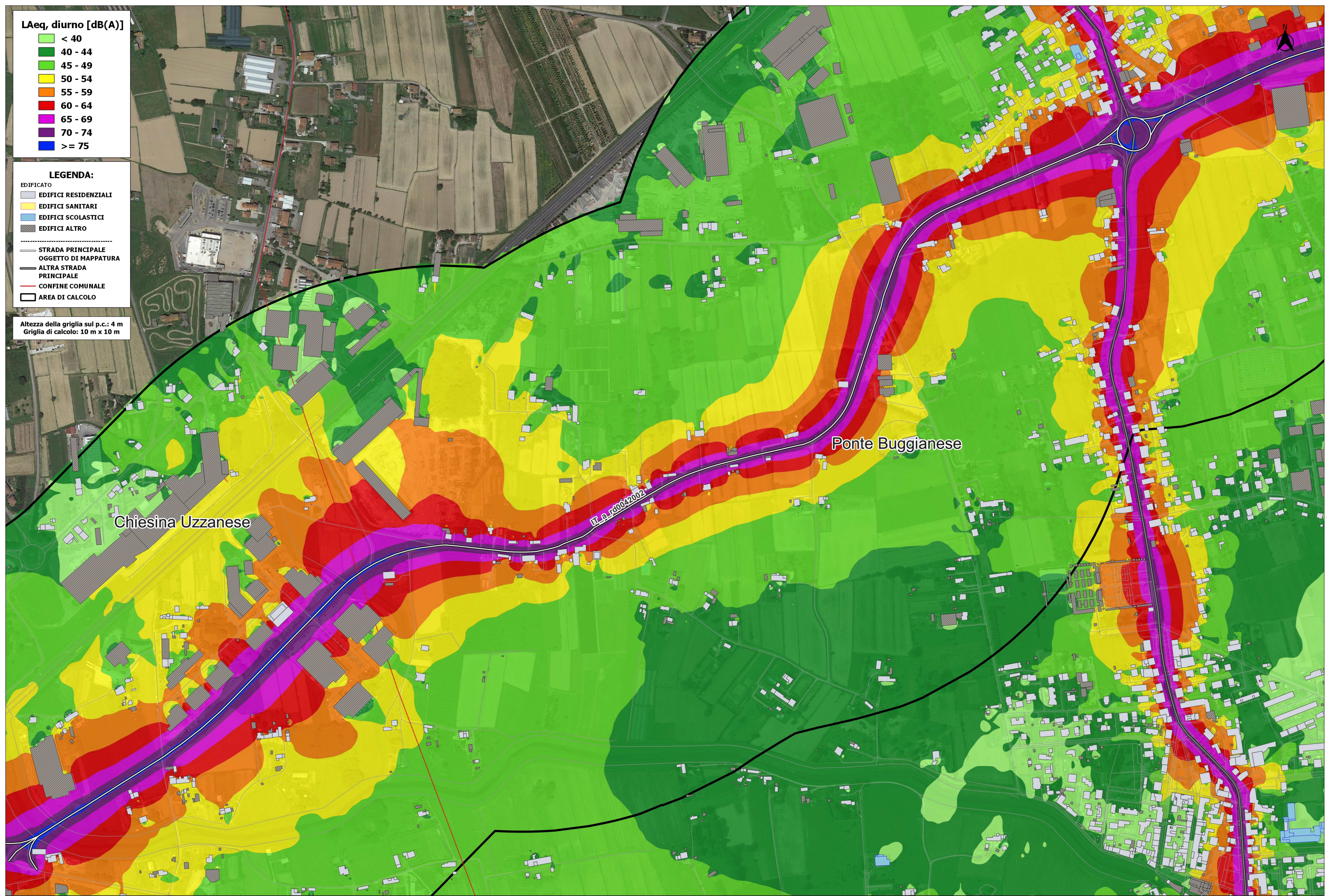


Altezza della griglia sul p.c.: 4 m  
Griglia di calcolo: 10 m x 10 m





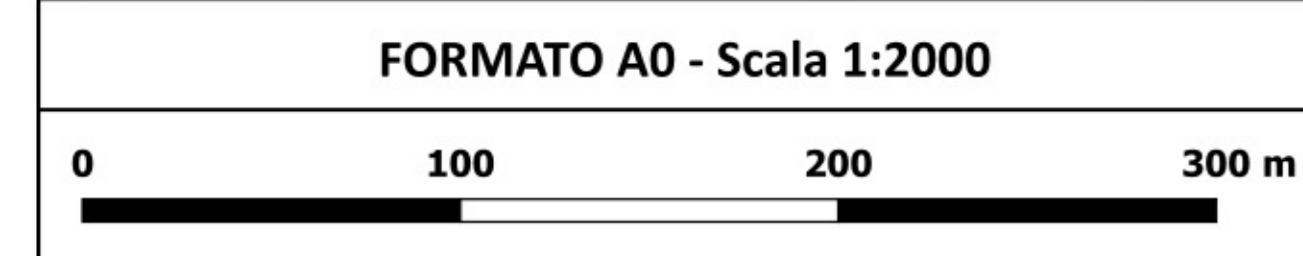
Altezza della griglia sul p.c.: 4 m  
Griglia di calcolo: 10 m x 10 m

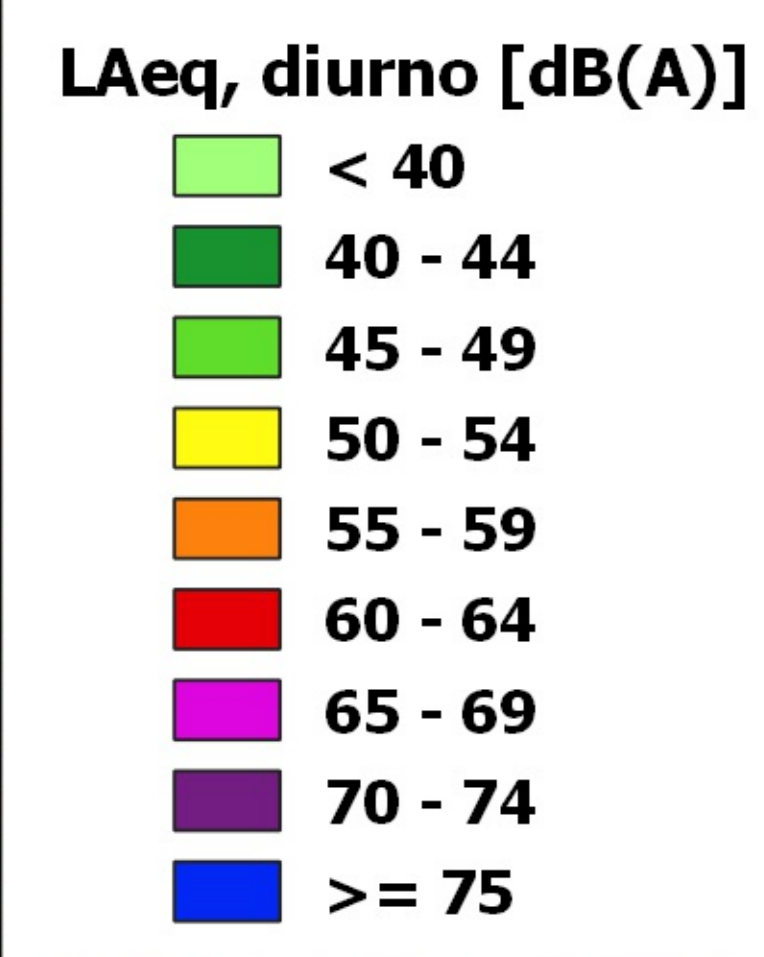


Chiesina Uzzanese

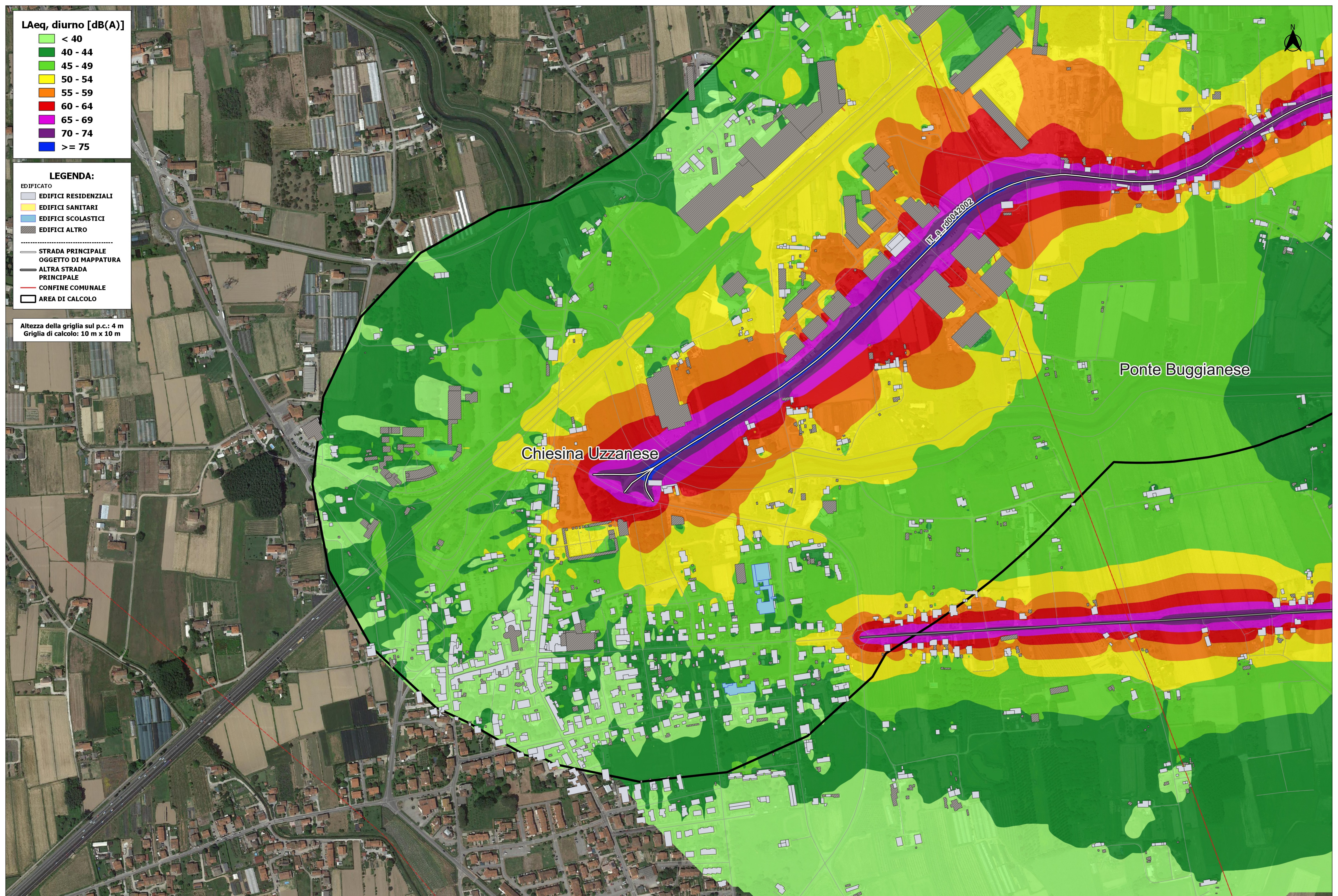
Ponte Buggianese

IT\_a\_rd0042002





Altezza della griglia sul p.c.: 4 m  
Griglia di calcolo: 10 m x 10 m



Chiesa Uzzanese

Ponte Buggianese

Via rd0042002

