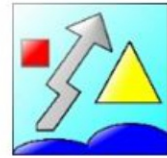


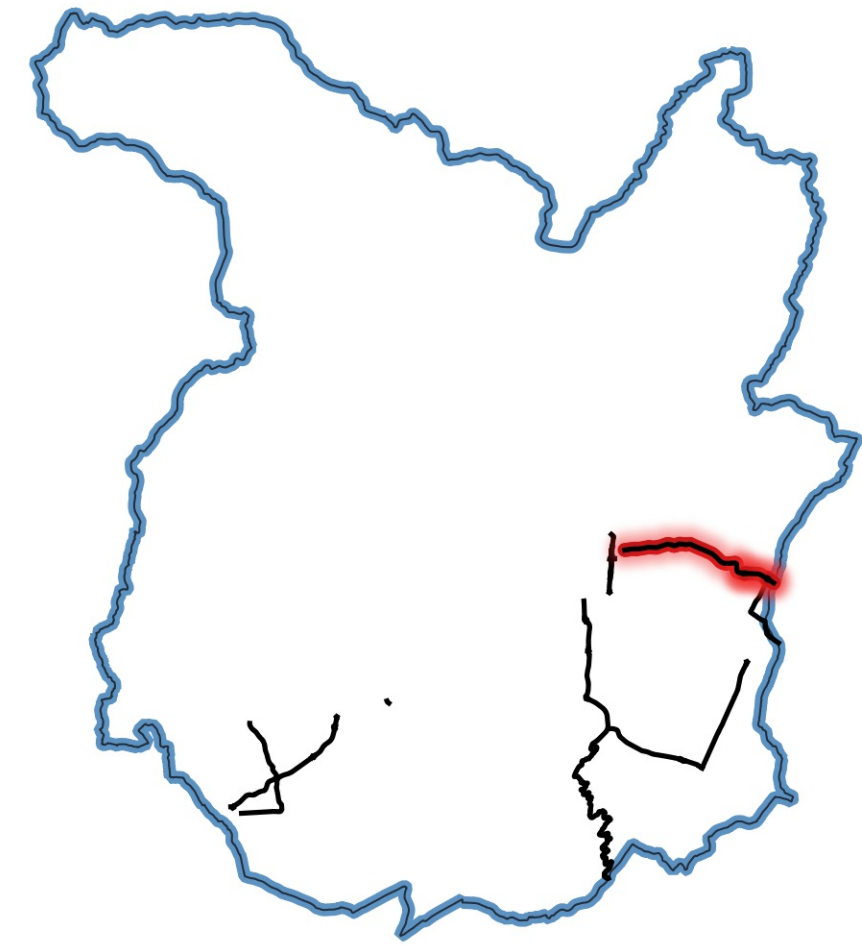


PROVINCIA di PISTOIA

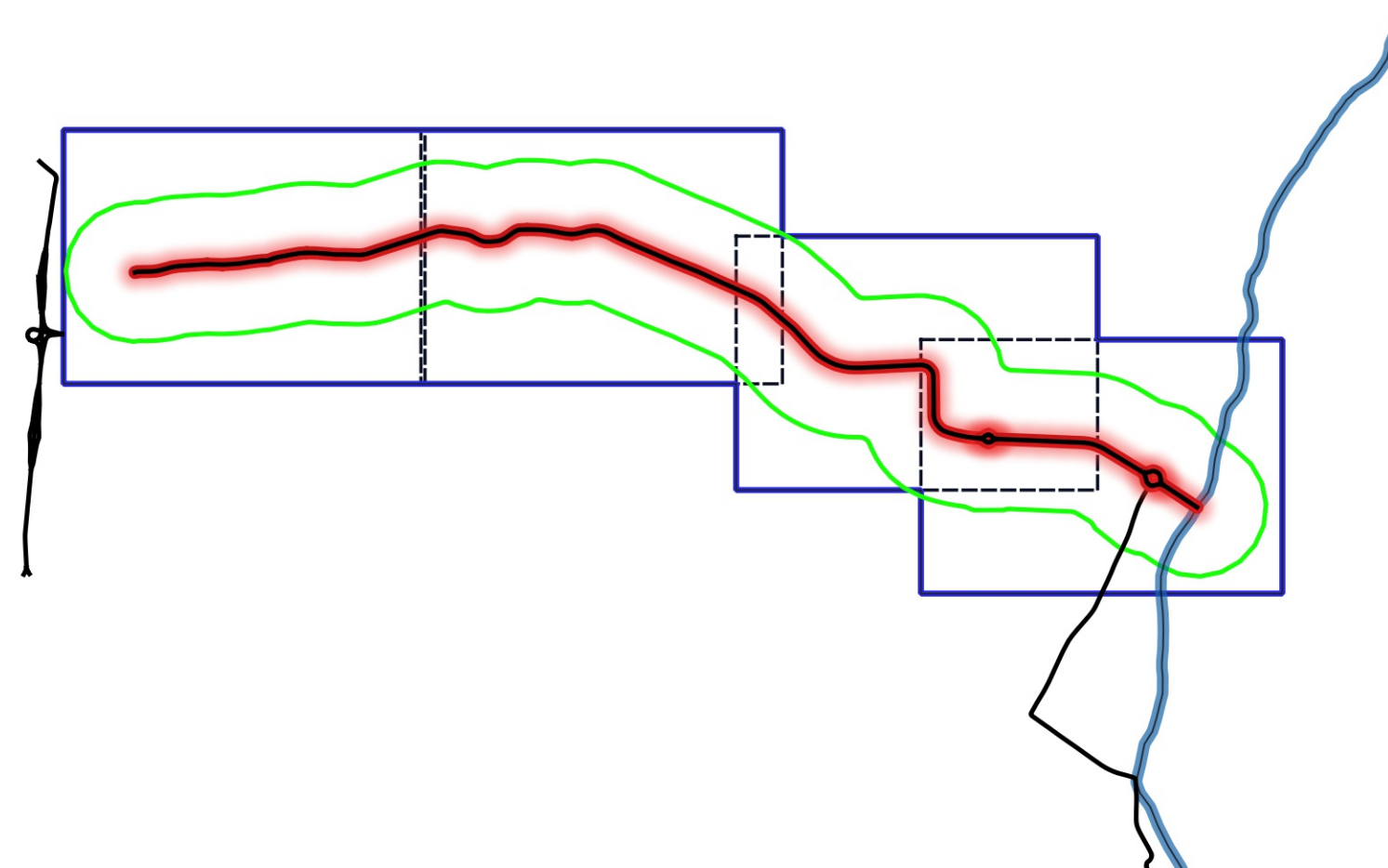


Vie en.ro.se.
Ingegneria

INQUADRAMENTO TERRITORIALE – PROVINCIA DI PISTOIA



INQUADRAMENTO TERRITORIALE – AREA DI CALCOLO



PROVINCIA DI
PISTOIA

Decreto Legislativo 19/08/2005, n. 194 "Attuazione della direttiva 2002/49/CE relativa alla determinazione e alla gestione del rumore ambientale"

Piano d'Azione - Terza fase di attuazione (quinquennio 2017/2021)

PROVINCIA DI PISTOIA

RETE STRADALE PROVINCIALE (assi stradali principali con flusso veicolare superiore ai 3 milioni di veicoli/anno)

IT_a_AP_MRoad0042_Allegato_4_07

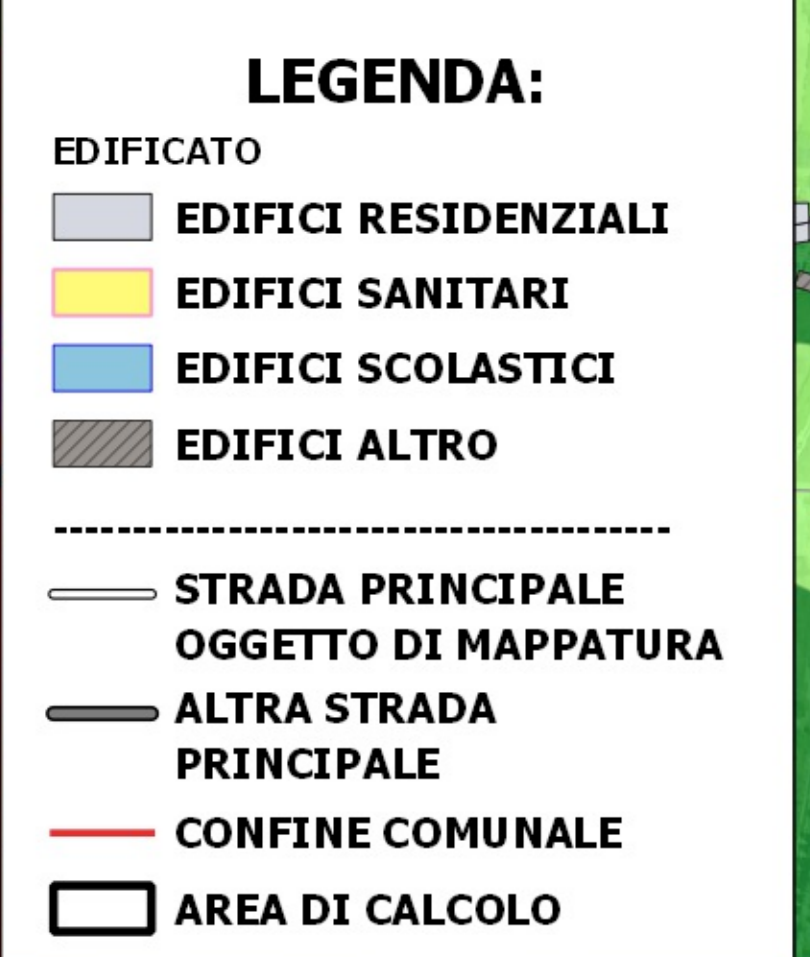
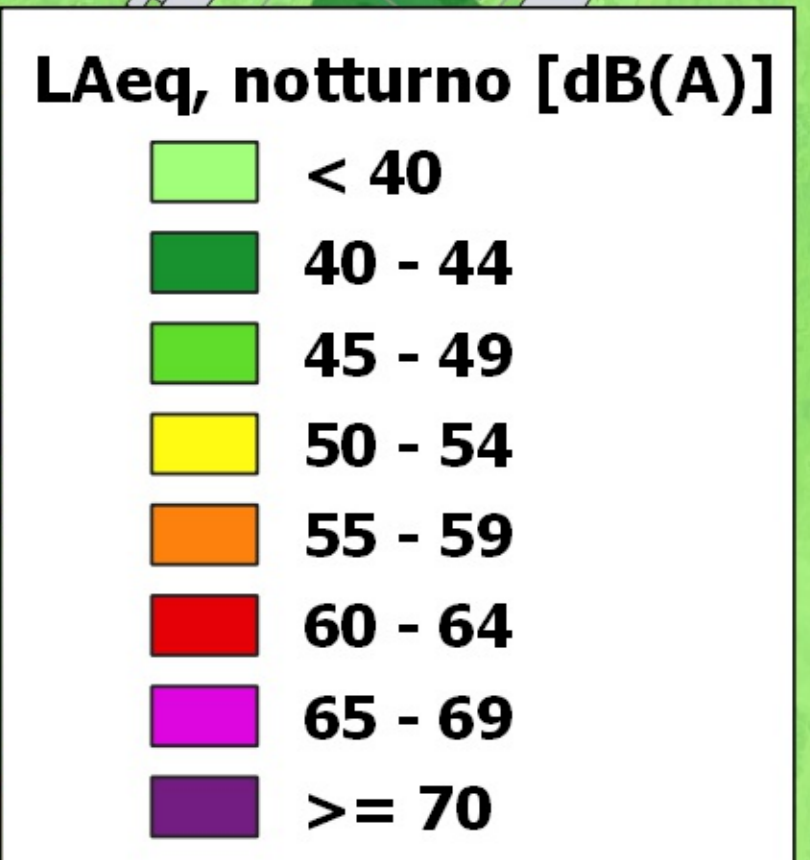
Mappe acustiche L_{notturno}(22.00-6.00) configurazione post operam - SP 5 MONTALESE

CODICE IDENTIFICATIVO: IT_a_rd0042007

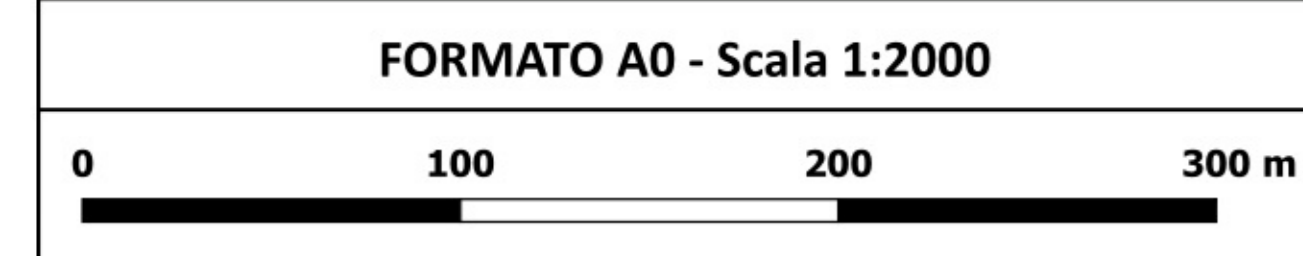
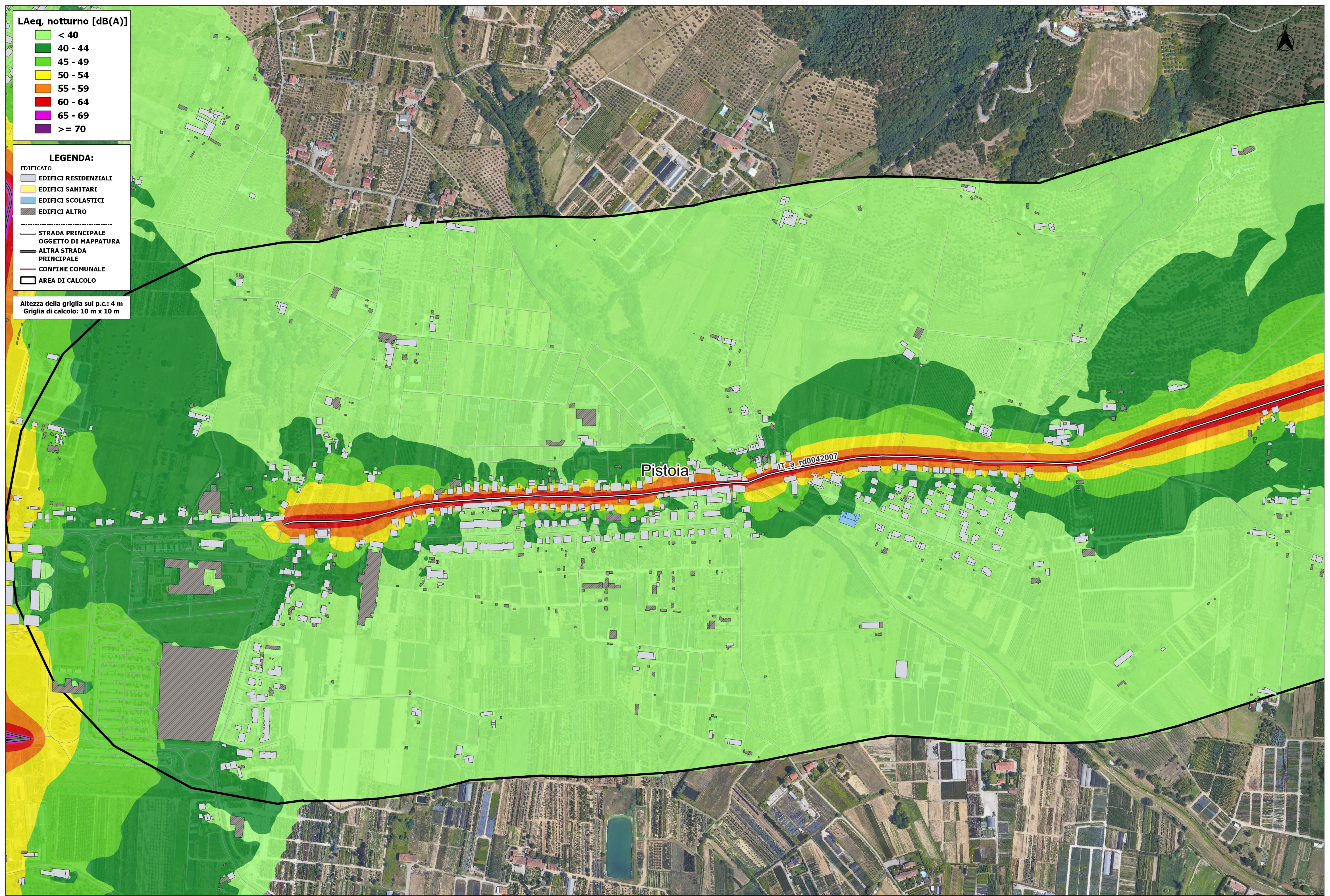
DENOMINAZIONE: SP 5 MONTALESE

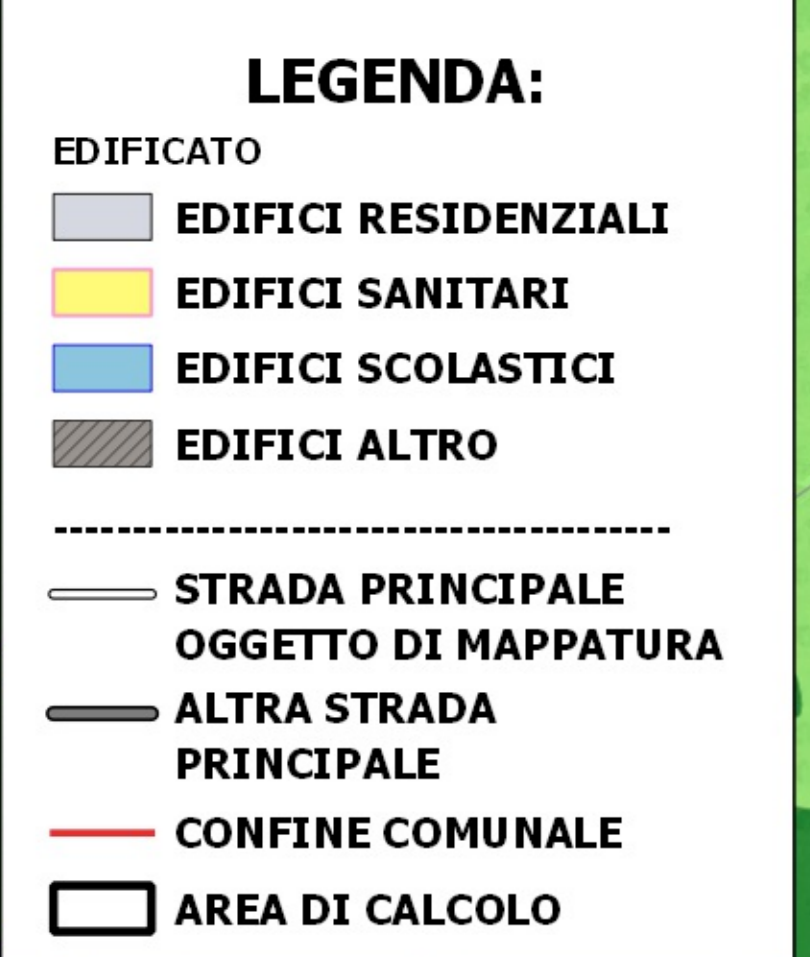
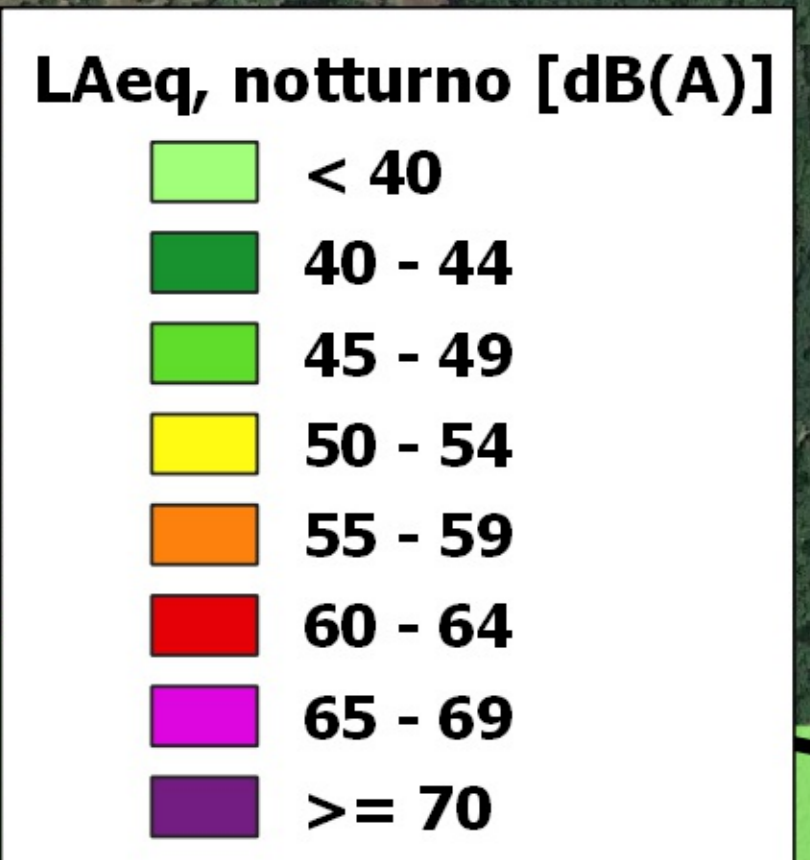
Data di consegna: 15/09/2022
Revisione: Rev.1

FORMATO A0 SCALA 1:2.000

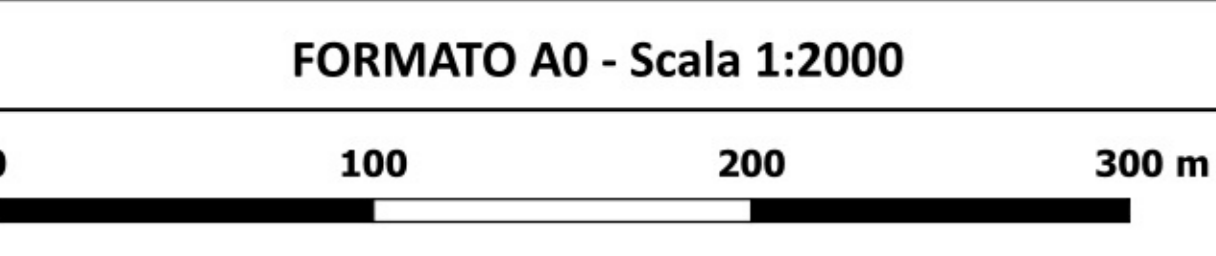
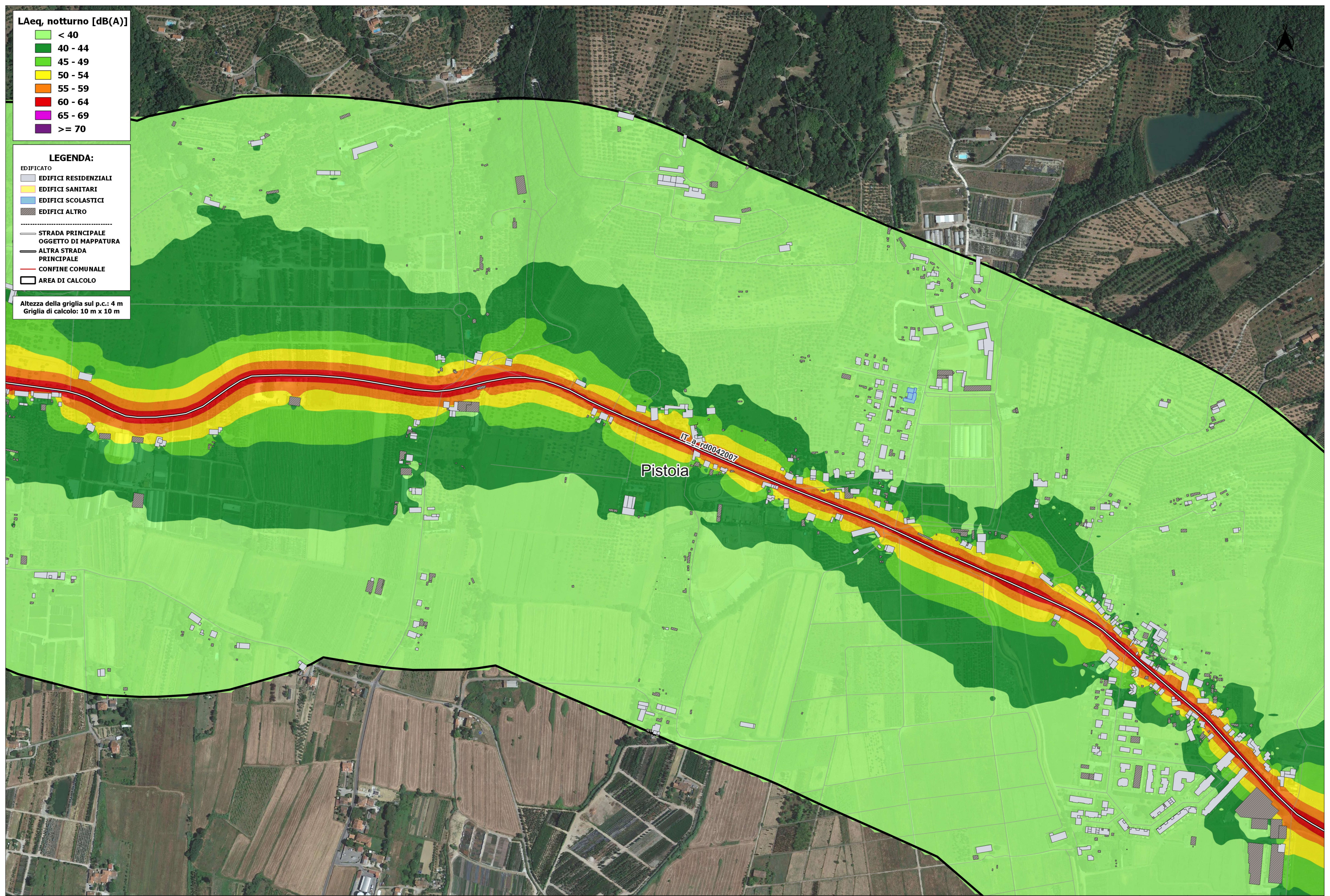


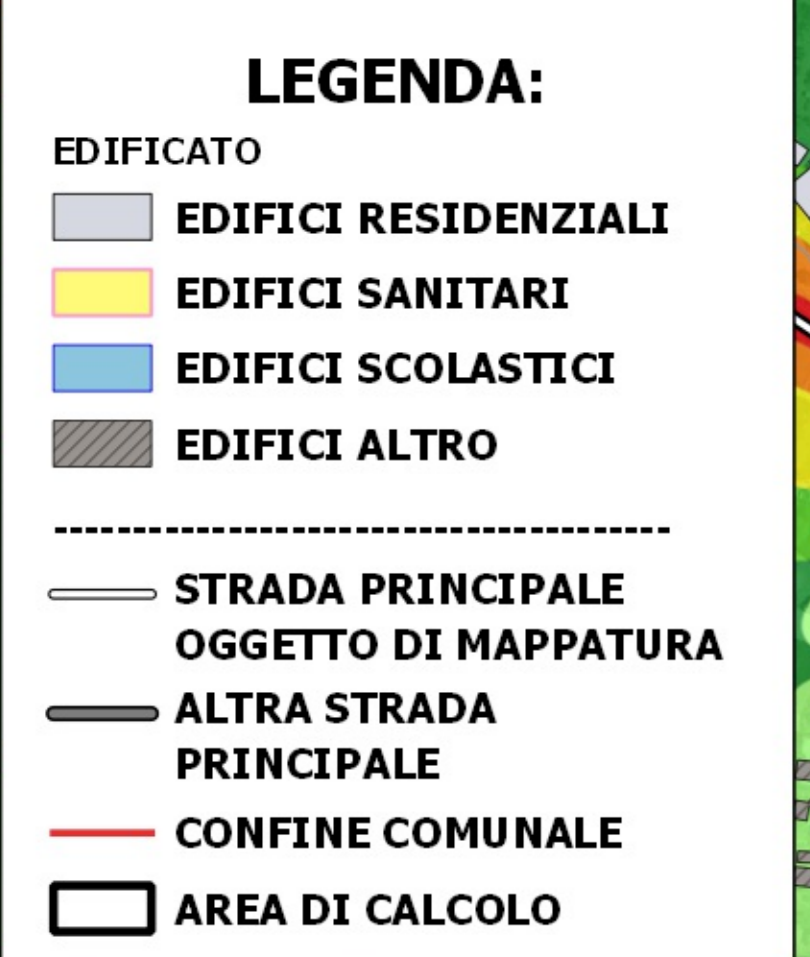
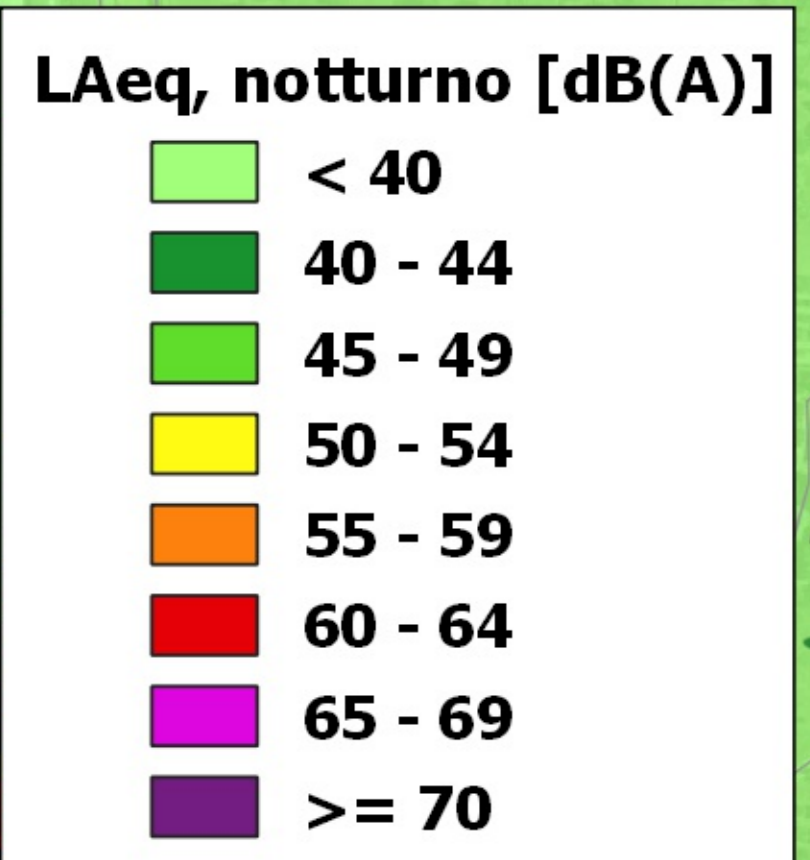
Altezza della griglia sul p.c.: 4 m
 Griglia di calcolo: 10 m x 10 m



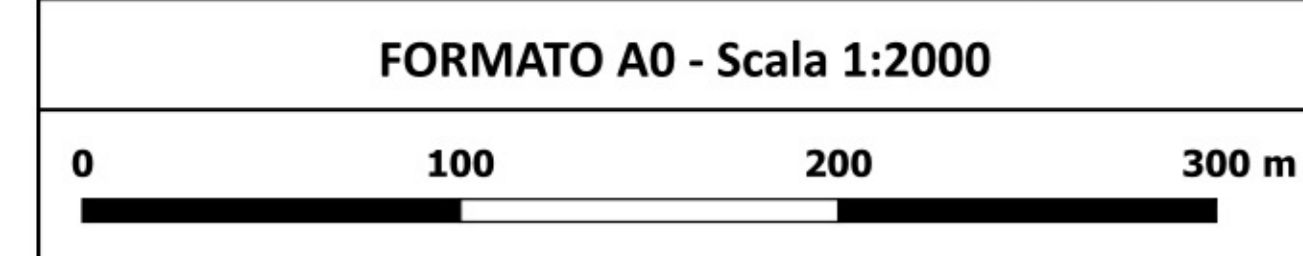
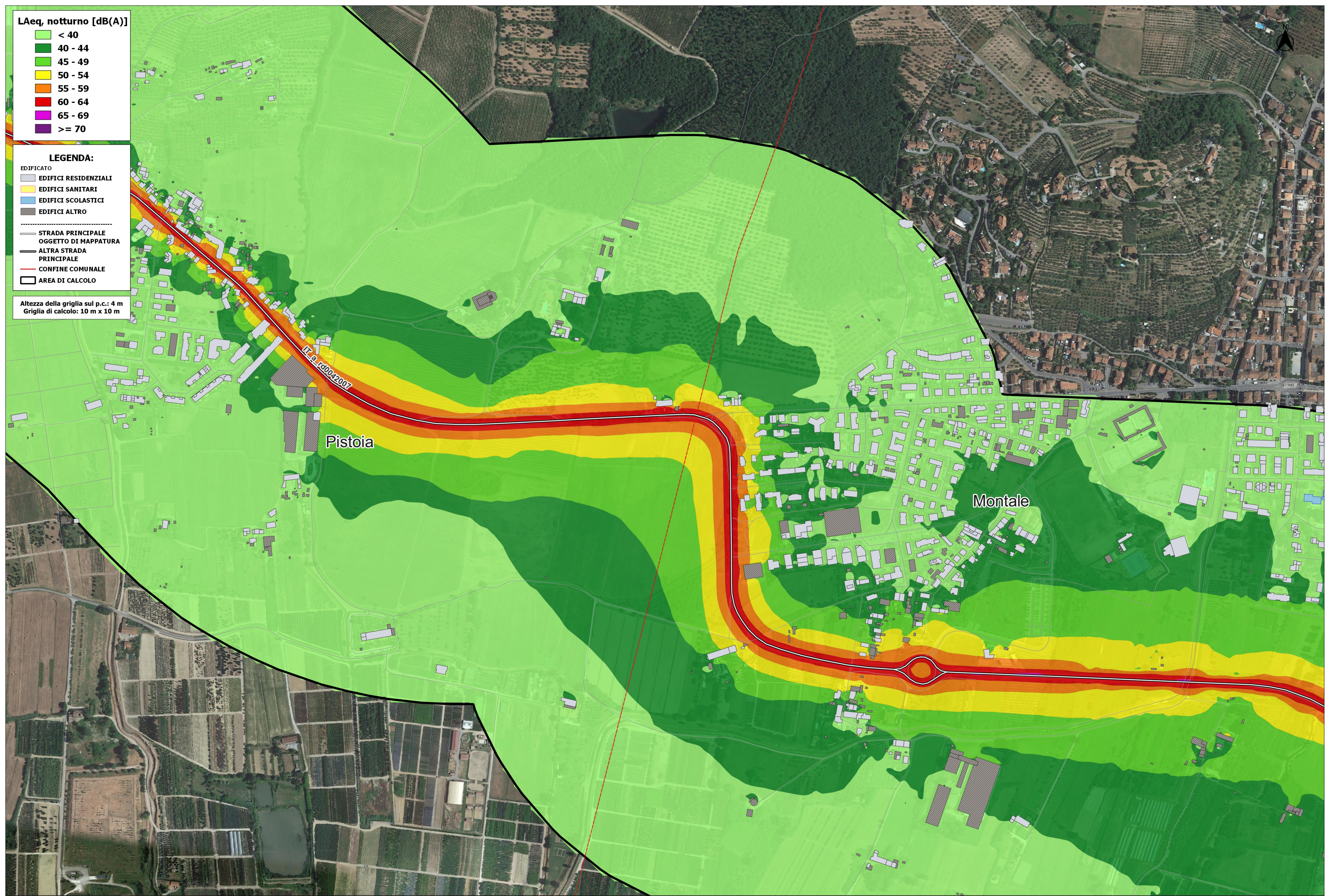


Altezza della griglia sul p.c.: 4 m
Griglia di calcolo: 10 m x 10 m



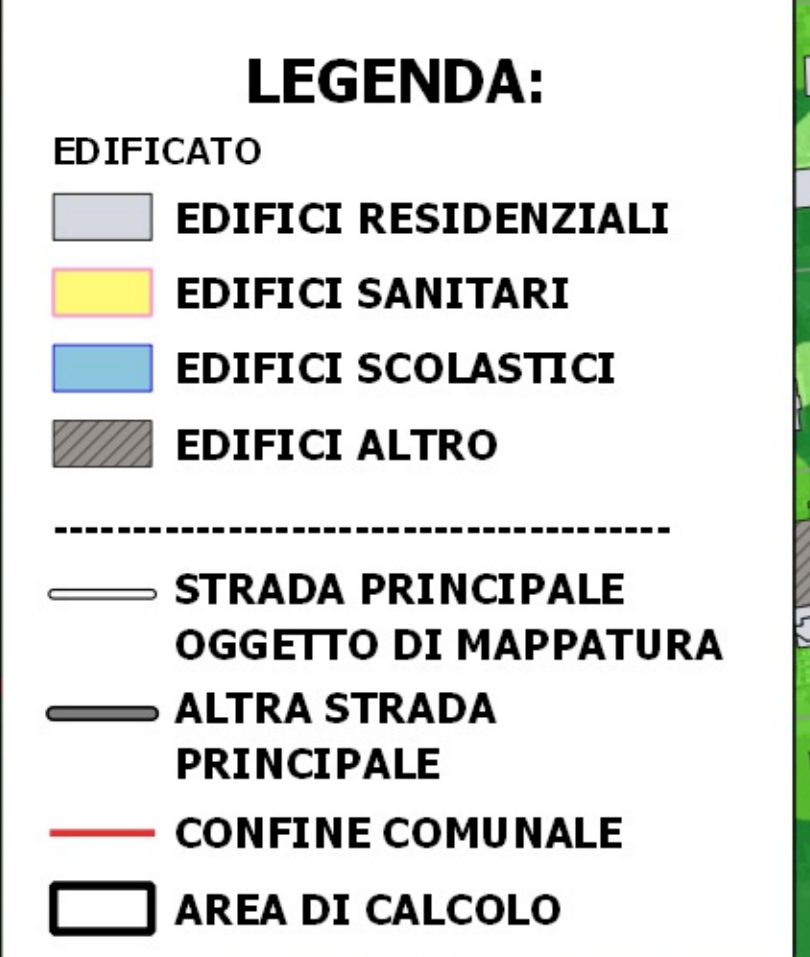
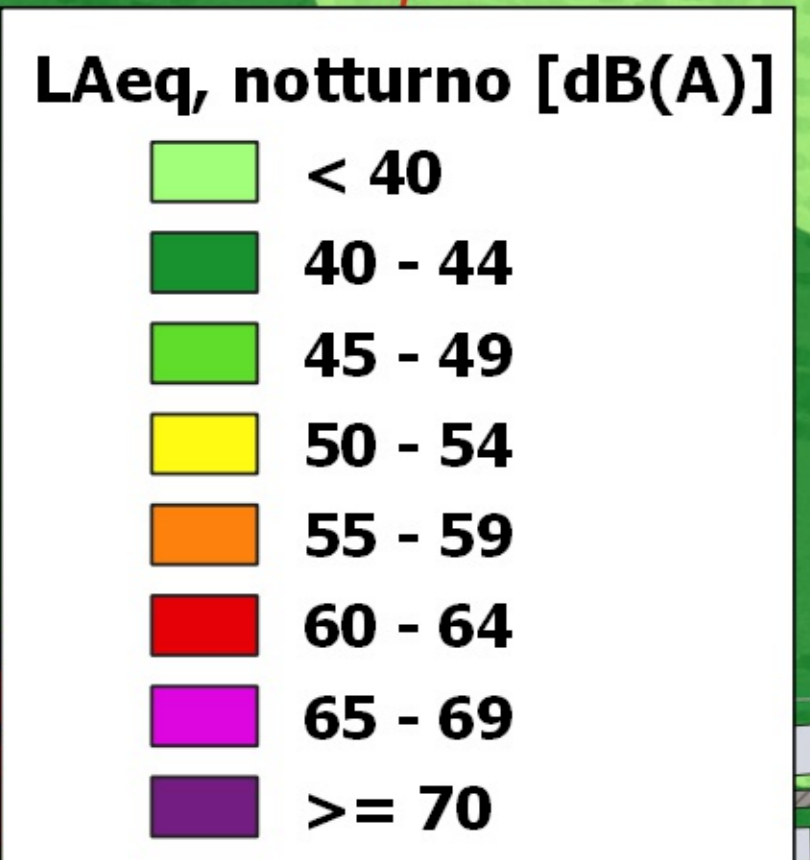


Altezza della griglia sul p.c.: 4 m
 Griglia di calcolo: 10 m x 10 m



Piano d'Azione Aggiornamento 2018 - Mappe acustiche L_{Aeq} notturno (22:00 - 6:00) configurazione post operam
 Codice Identificativo: IT_a_rd0042007 Denominazione: SP 5 MONTALESE Tav. 3/4





Altezza della griglia sul p.c.: 4 m
Griglia di calcolo: 10 m x 10 m

